

CASEWORK GENERAL NOTES

Verify in Field (VIF): Field verify all dimensions and conditions before fabrication.

Upper Cabinet Clearance: 12" minimum clear inside dimension, UNO.

Electrical and Data Coordination: Coordinate electrical and data device locations with millwork.

Locks: Provide locks on cabinet drawers and doors, keyed alike by room, UNO.

Grommets: Locate as directed by Owner after installation.

Cabinet Design Series

- Provide cabinets with integral finished ends and scribes at wall to wall installations not exceeding 1-1/2 inches in width. Where cabinets meet walls or other cabinets, provide filler panels, of sufficient width, but not exceeding 1-1/2 inches, to allow doors with pulls to swing a minimum of 90 degrees and to prevent drawers from hitting adjacent door or drawer pulls. Hardware and accessories shall be as provided for in these standards.

CDS are subdivided as follows:

Table listing CDS types: Base Cabinets w/o Drawers (100 Series), Base Cabinets w/ Drawers (200 Series), Wall Hung Cabinets (300 Series), Tall Storage Cabinets (400 Series), Tall Wardrobe Cabinets (500 Series), Library Cabinets (600 Series), Moveable Cabinets (700 Series).

General Notes

- 100 or 200 Series cabinets may be converted into moveable cabinets by prefixing a "7" to the number. (Example: 7-102-36"x 30"x 18" [7-102-914 mm x 762 mm x 457 mm]). Moveable cabinets shall be equipped with adequate approved casters for the intended load capacity. CDS #'s 728, 729, 735, 736, 737, 738, and 739 require metal angle reinforced corners. Carts and rolling tall storage cabinets with doors, lacking any horizontal and/or vertical stabilizing dividers, require a diaphragm bottom, specifically CDS #'s 702, 712, 716, 722, 743, 744, 746, 747, 750, and 751. Wardrobe cabinets (500 Series) with doors require a framed mirror on one door, and cabinets # 533 and 534 require a paper roller/cutter and slide out tilting paper shelves. Cart storage cabinets are required to have hardwood side guides, specifically CDS #'s 160, 161, and 162. Ceramics drying cabinets are required to have galvanized metal frame shelves with wire mesh, specifically CDS #'s 198 199, and 459. File drawers require full extension slides and a file hanging system, specifically CDS #'s 223, 224, 230, 231, 240, 242, 253, 255, 531, 532, and 533. Wardrobe cabinets are required to have a shelf, pole, and framed mirror (without pin tray) when closed with hinged doors, specifically CDS #'s 501, 511, 512, 522, 530, 531, 532, and 552. Wardrobe cabinets are required to have a roll paper dispenser/cutter, specifically CDS #'s 533 and 534.

INTERIOR ELEVATIONS GENERAL NOTES

RE: North American Architectural Woodwork Standards v3.0 (NAAWS), Cabinet Design Series for cabinet types.

RE: G500 for Interior Wall Types.

RE: A640 for the Finish Schedule.

Dimensions shown to walls or casework are to finished face of wall or cabinet, UNO.

Equipment indicated by dashed lines is a general representation and shown for coordination purposes only.

Mechanical, electrical, plumbing and telecom rough-in locations are shown for general coordination purposes only. Refer to mechanical, electrical, plumbing and telecom drawings.

Countertops: 25" deep with 4" high backsplash, UNO. Provide sidesplashes at walls, tall cabinets or similar transitions.

Blocking: Provide blocking in walls at cabinets, wall-mounted accessories, equipment, display boards and similar items.

Finishes: Finishes are required on all exposed and semi-exposed surfaces, UNO. Wall elevations are not shown for walls where the Finish Schedule is deemed adequate to convey the intent.

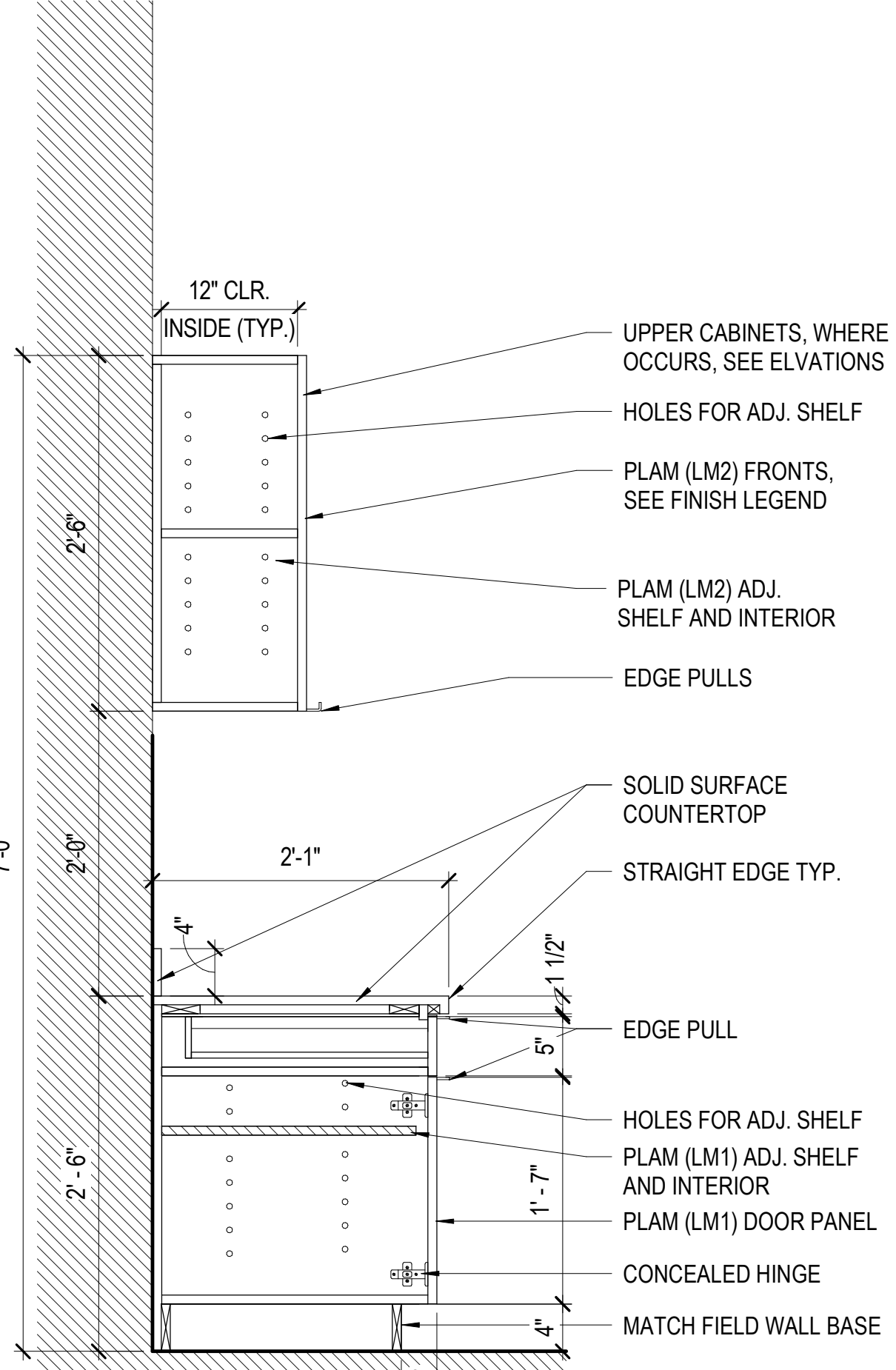
Cabinet Locks: Provide locks on cabinet drawers and doors, keyed alike by room, UNO.

Casework Finishes: Provide laminate finishes on all exposed and semi-exposed surfaces as required by the specifications. Provide laminate finishes on concealed surfaces if required by the specifications. Refer to NAAWS Section 10.4.4 for definitions of exposed, semi-exposed and concealed surfaces.

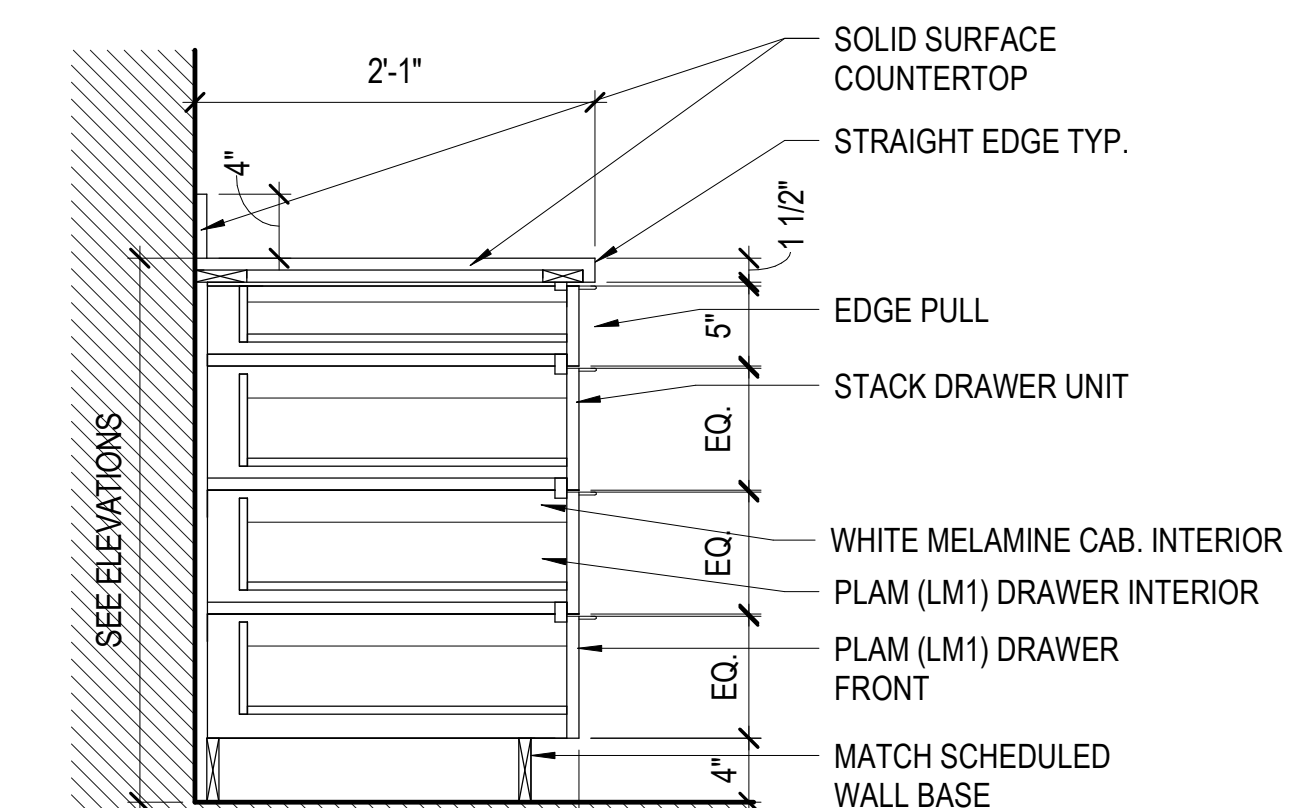
KEYNOTES - INTERIOR

- 1 FILLER PANEL
2 SOLID SURFACE COUNTERTOP, SEE FINISH SCHEDULE
3 REFRIGERATOR - OFCI
4 ICE MACHINE - OFCI
5 COFFEE MAKER - OFCI
6 DISHWASHER - OFCI
7 OWNER PROVIDED EQUIPMENT

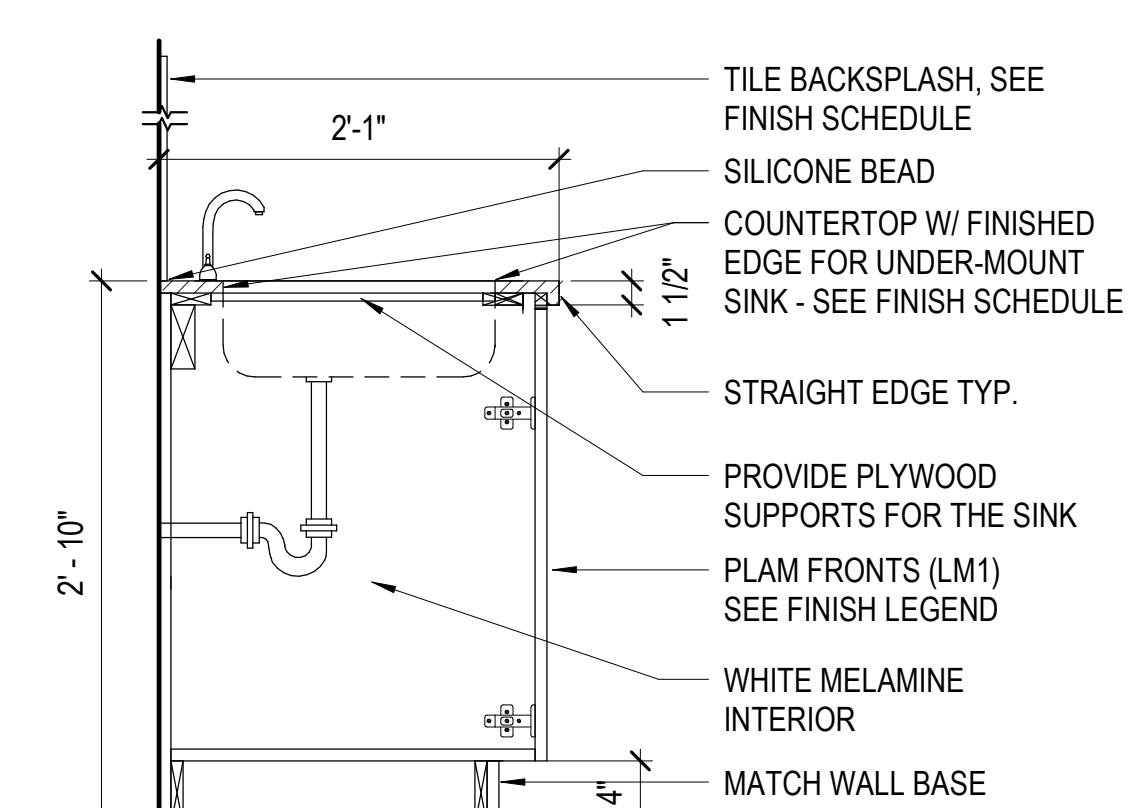
C:\Users\SarahM\Documents\A31_20210505_London_Tech_Spec\dwg\TI_CENTRAL_Serammore.rvt 7/12/2021 2:22:17 PM



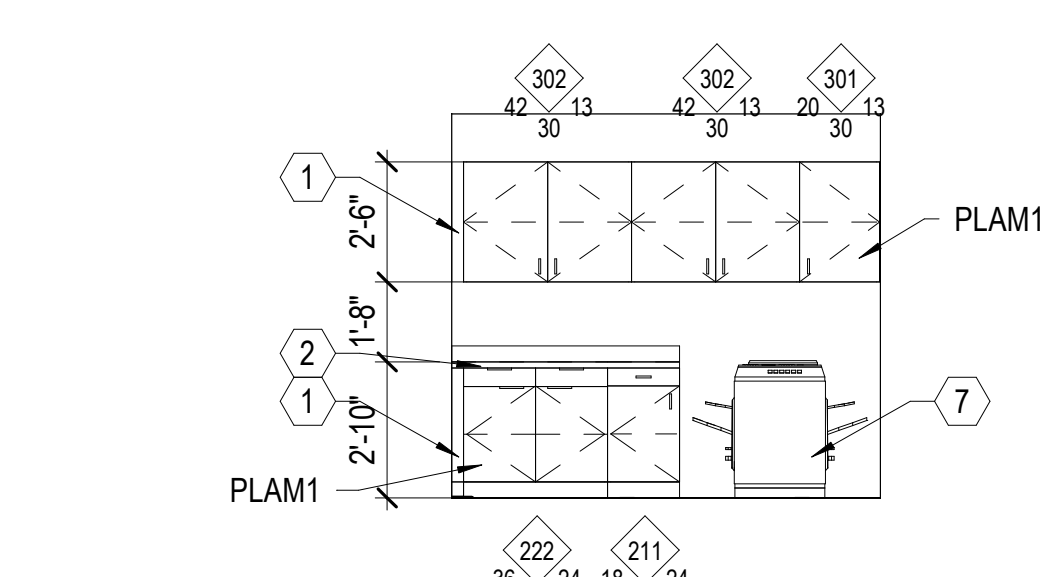
E1 MILLWORK LOWER / UPPER SCALE: 1" = 1'-0"



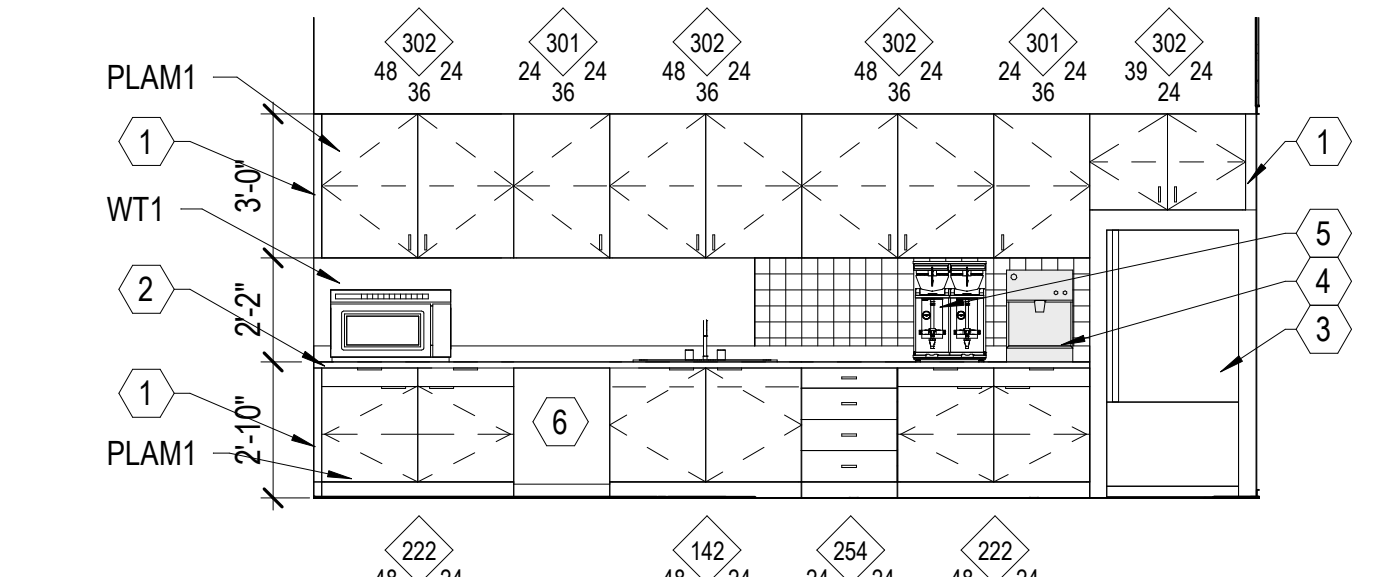
E2 MILLWORK DRAWERS, TYP. SCALE: 1" = 1'-0"



E3 MILLWORK w/SINK SCALE: 1" = 1'-0"



E4 OPEN OFFICE STORAGE SCALE: 1/4" = 1'-0"



E5 BREAKROOM SCALE: 1/4" = 1'-0"

SPECULATIVE TI
LINDON TECH 5
1971 W 700 N
LINDON, UT 84042

0321 MHTN ARCHITECTS, INC.
Confidentiality Notice
This document is intended for use on the Project identified herein by individuals and companies involved in the design, permitting, bidding and construction of the project. MHTN ARCHITECTS, INC. grants no other rights to distribute and reproduce this document for any other purpose than those indicated in writing. If a digital copy of this document is received in error, please delete it.

SEAL



MHTN PROJECT NO. PROJ. #

Original drawing is 36 x 42. Do not scale contents of this drawing.

REVISIONS: CONTRACTOR TO VERIFY DRAWINGS IN FIELD USE REFLECT LAST REVISION DATE.

NO. DATE DESCRIPTION

Table with columns for revision number, date, and description.

ISSUE

PERMIT SET

12 JULY 2021

SHEET NAME

INTERIOR ELEVATIONS & CASEWORK DETAILS

SHEET NUMBER

A410

A

B

C

D

C:\Users\Samantha\Documents\A61_2021055_Lindon_Tech_Speculative_TL_CENTRAL_Schematic.rvt
7/12/2021 2:22:18 PM

DOOR AND FRAME SCHEDULE														
DOOR #	TYPE	DOOR				FRAME		HEAD DETAIL	JAMB DETAIL	SILL DETAIL	FIRE RATING (MIN)	HARDWARE SET	REMARKS	DOOR #
		WIDTH	HEIGHT	THICKNESS	MATERIAL	TYPE	MATERIAL							
101	F	3'-0"	8'-0"	1 3/4"	WD	1	HM	D4/A600	D3/A600	E3/A600		01		101
102	F	3'-0"	8'-0"	1 3/4"	WD	1	HM	D4/A600	D3/A600	E3/A600		02		102
103A	FG	3'-0"	8'-0"	1 3/4"	WD	2	AL	E2/A600	E1/A600	E3/A600		03		103A
103B	FG	3'-0"	8'-0"	1 3/4"	WD	1	HM	D4/A600	D3/A600	E3/A600		03		103B
104	FG	3'-0"	8'-0"	1 3/4"	WD	1	HM	D4/A600	D3/A600	E3/A600		01		104
105	FG	3'-0"	8'-0"	1 3/4"	WD	2	AL	E2/A600	E1/A600	E3/A600		01		105
106	FG	3'-0" 1/8"	8'-0"	1 3/4"	WD	2	AL	E2/A600	E1/A600	E3/A600		01		106
107	FG	3'-0"	8'-0"	1 3/4"	WD	2	AL	E2/A600	E1/A600	E3/A600		01		107
110	FG	2'-11" 1/8"	8'-0"	1 3/4"	WD	2	AL	E2/A600	E1/A600	E3/A600		03		110
111	FG	3'-0"	8'-0"	1 3/4"	WD	2	AL	E2/A600	E1/A600	E3/A600		01		111
112	FG	3'-0"	8'-0"	1 3/4"	WD	2	AL	E2/A600	E1/A600	E3/A600		03		112
Grand total: 11														

DOOR SCHEDULE GENERAL NOTES

RE: A620 for the Glazing Schedule.

RE: Division 8 Section "Door Hardware" for hardware sets.

Door Leaves: At each door, provide the number of leaves shown on the plans. Where two leaves are shown, provide equal leaves, UNO.

Frame Depth: Coordinate hollow metal frame depth with wall thickness, wrapping stud framed walls. Provide depths as scheduled for masonry walls, UNO.

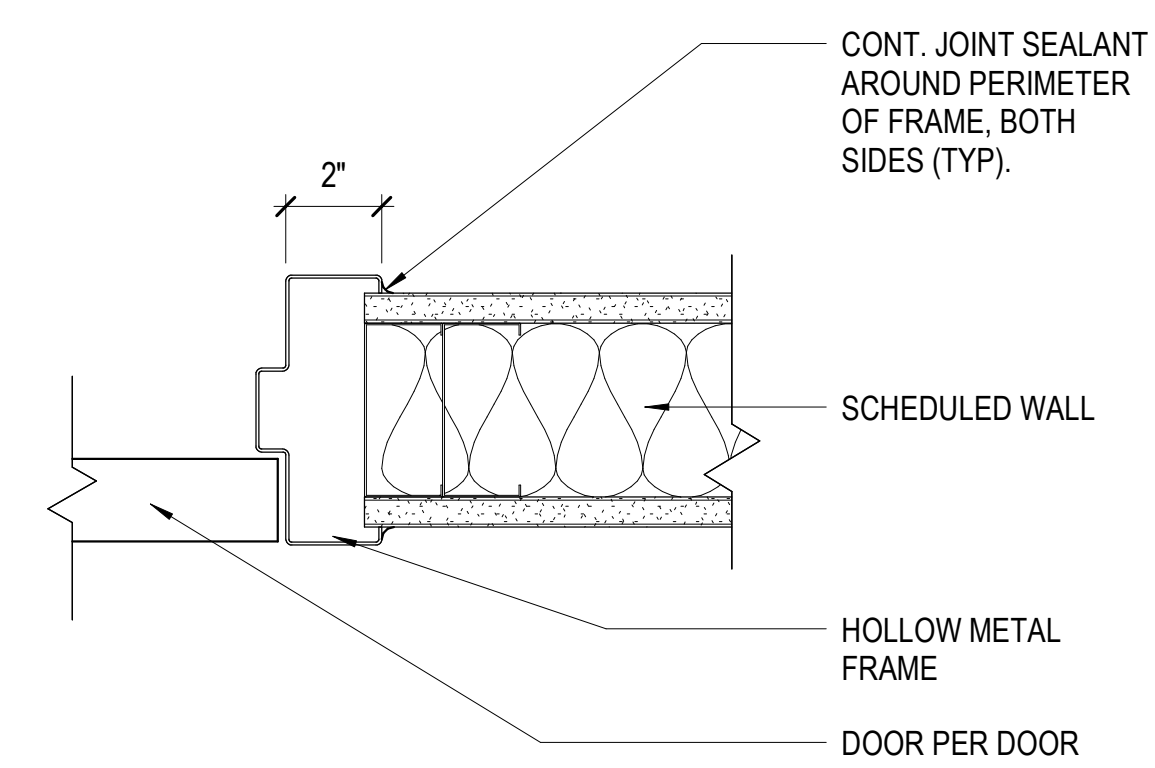
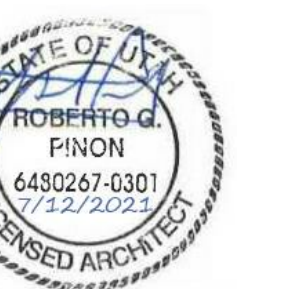
Abbreviations: Door and Frame Schedule Remarks abbreviations:

- ADA ADA Actuator
- CR Card Reader
- DE Delayed Egress
- EL Electric Latch
- ES Electric Strike
- MO Motor Operation
- MHO Magnetic Hold Open

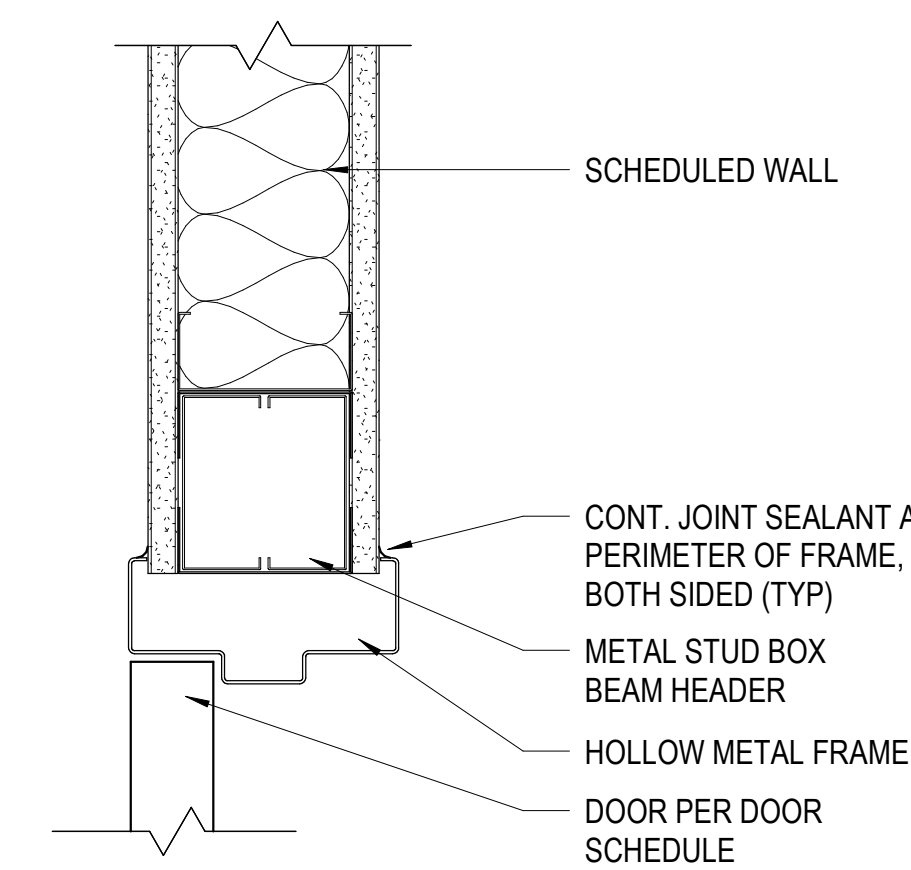
SPECULATIVE TI

LINDON TECH 5
1971 W 700 N
LINDON, UT 84042

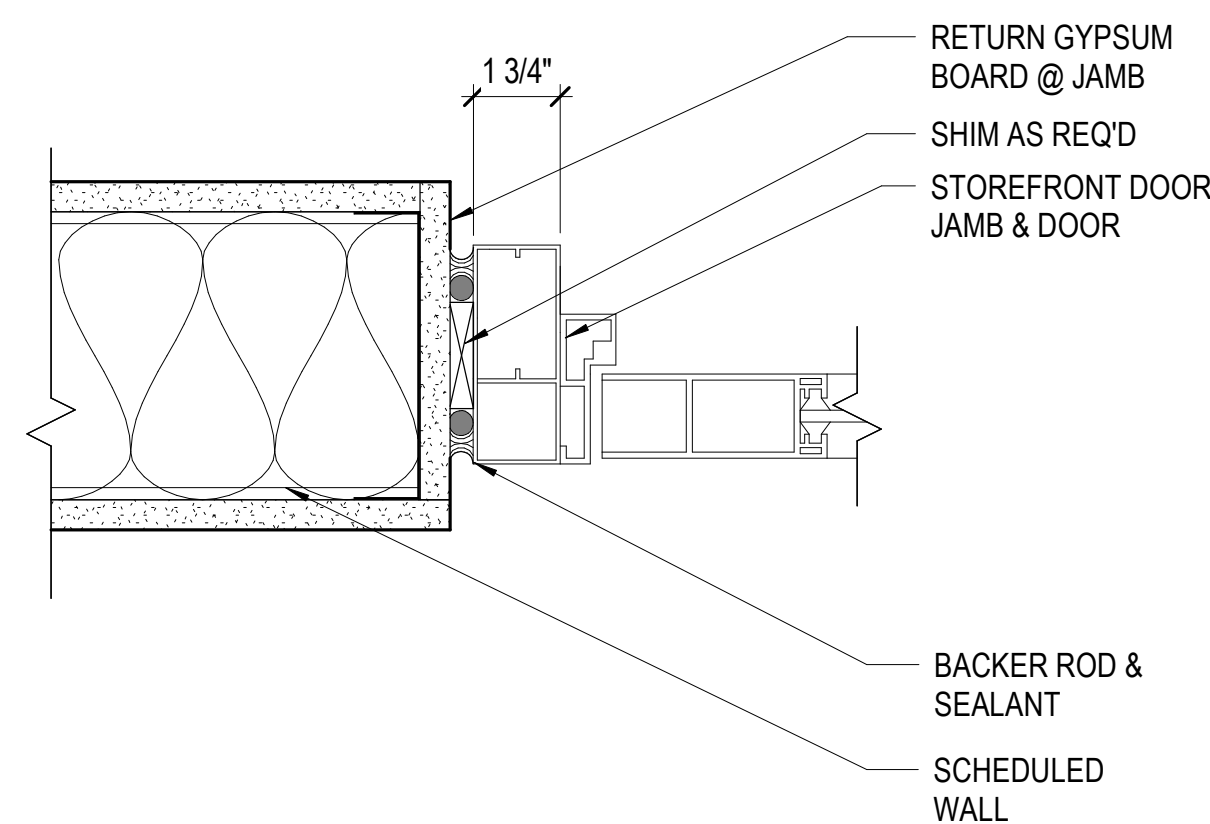
©2021 MHTN ARCHITECTS, INC.
Confidentiality Notice:
This document is intended for use on the Project identified herein by individuals and companies involved in the design, permitting, bidding and construction of the Project. MHTN ARCHITECTS, INC. grants neither rights of distribution nor reproduction of this document for any other purpose. Distribution, printing or copying this document for purposes other than those indicated is strictly prohibited. If a digital copy of this document is received in error, please delete it.



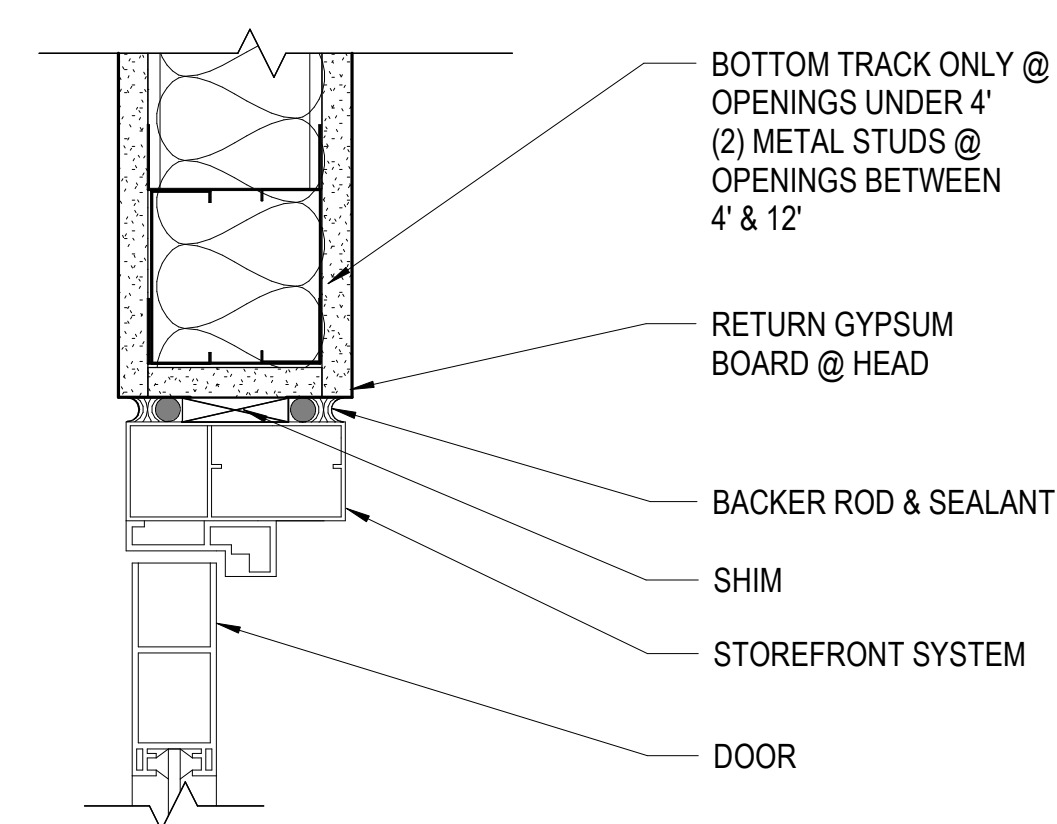
D3 DOOR JAMB DETAIL
SCALE: 3" = 1'-0"



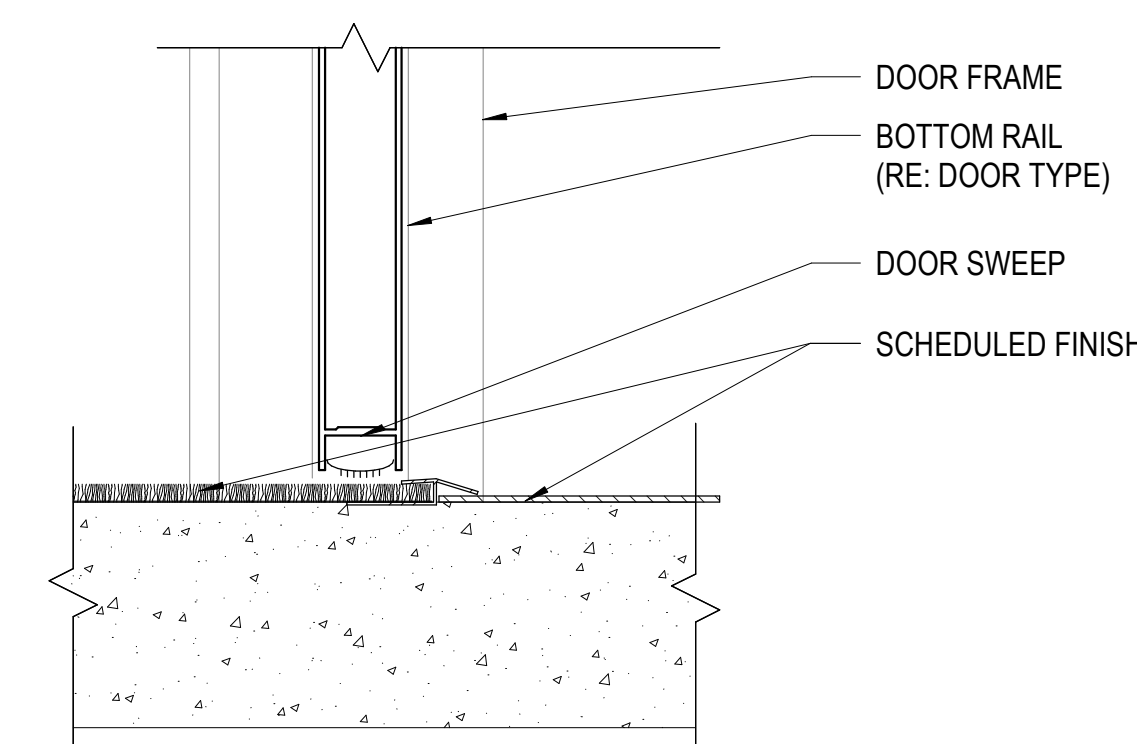
D4 DOOR HEAD DETAIL
SCALE: 3" = 1'-0"



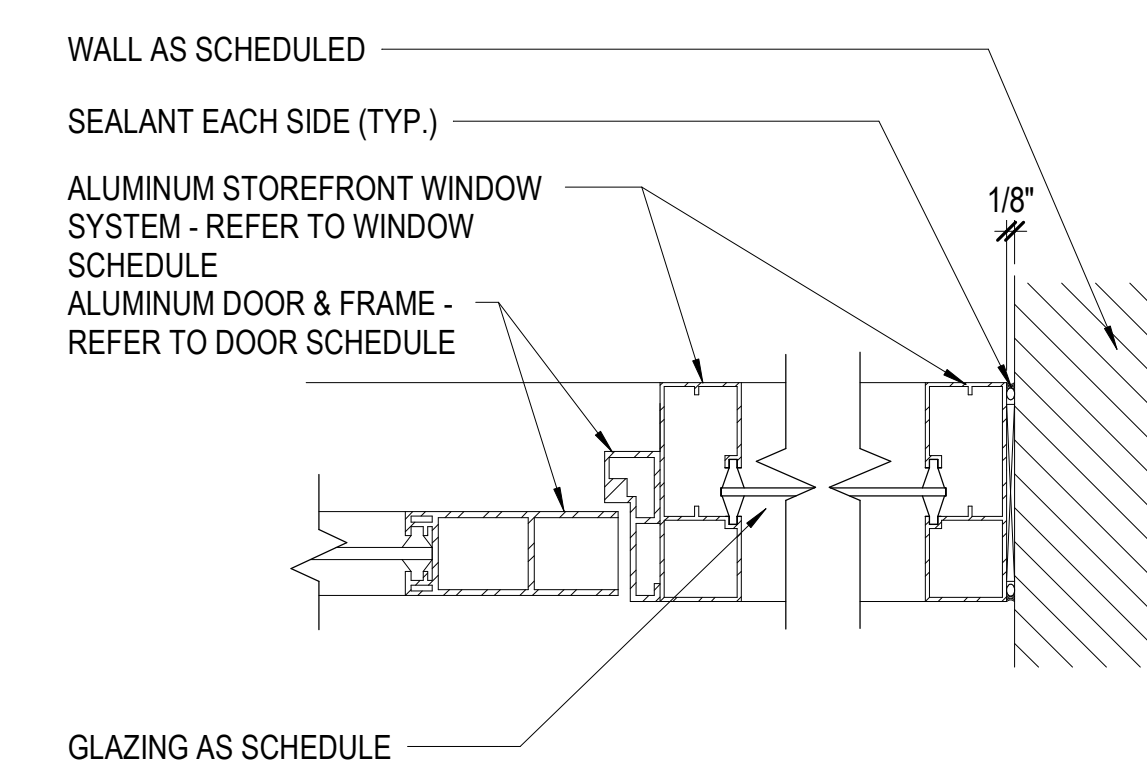
E1 JAMB DETAIL
SCALE: 3" = 1'-0"



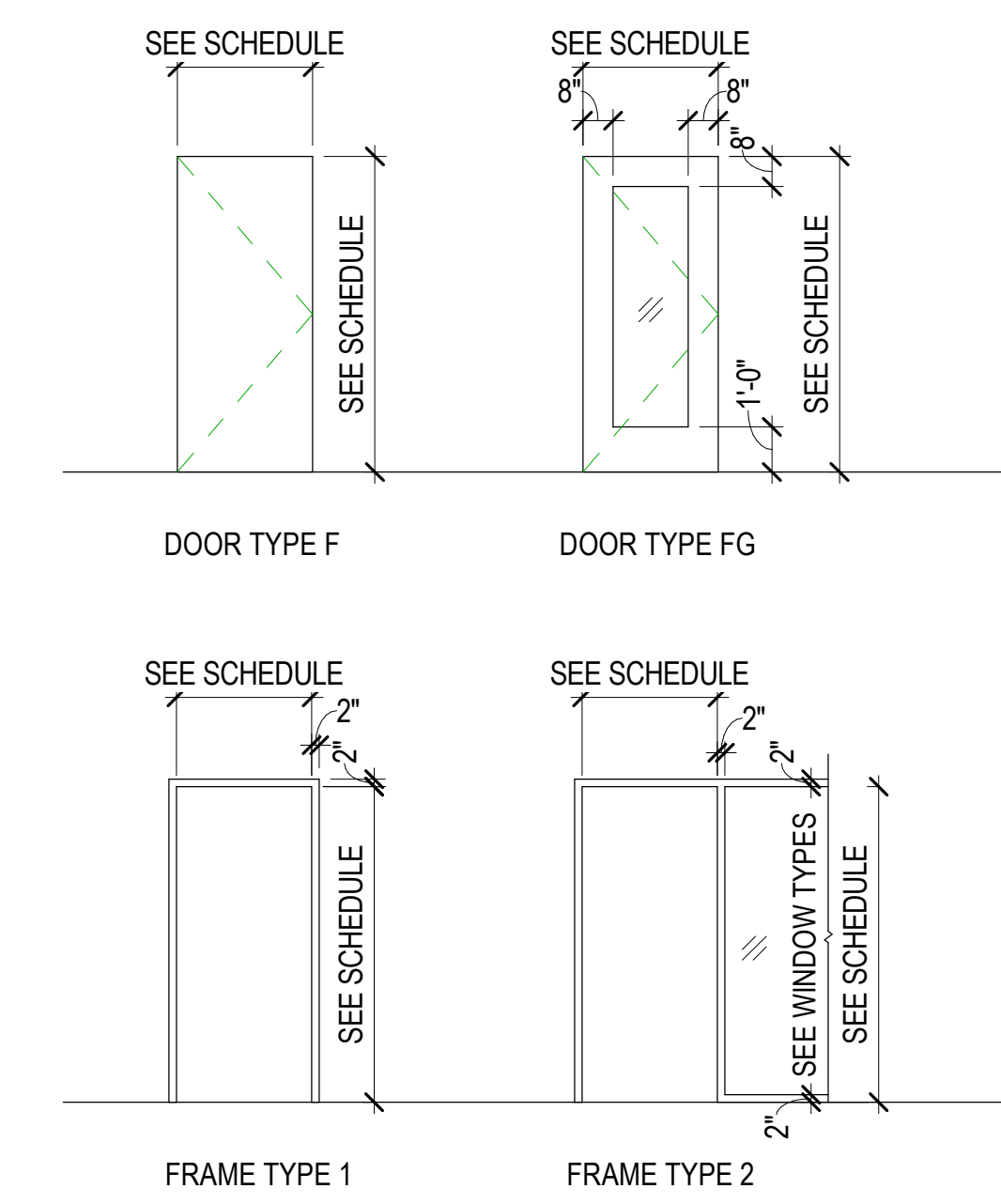
E2 HEAD DETAIL
SCALE: 3" = 1'-0"



E3 SILL DETAIL
SCALE: 3" = 1'-0"



E4 STOREFRONT JAMB DETAIL
SCALE: 3" = 1'-0"



DOOR & FRAME TYPES

MHTN PROJECT NO. PROJ #

Original drawing is 30 x 42. Do not scale contents of this drawing.
REVISIONS:
CONTRACTOR TO VERIFY DRAWINGS IN FIELD USE REFLECT LAST REVISION DATE.

NO.	DATE	DESCRIPTION

ISSUE:
PERMIT SET
12 JULY 2021

SHEET NAME:
DOOR SCHEDULE & DETAILS

SHEET NUMBER:
A600

A

B

C

D

E

5

WINDOW TYPES GENERAL NOTES

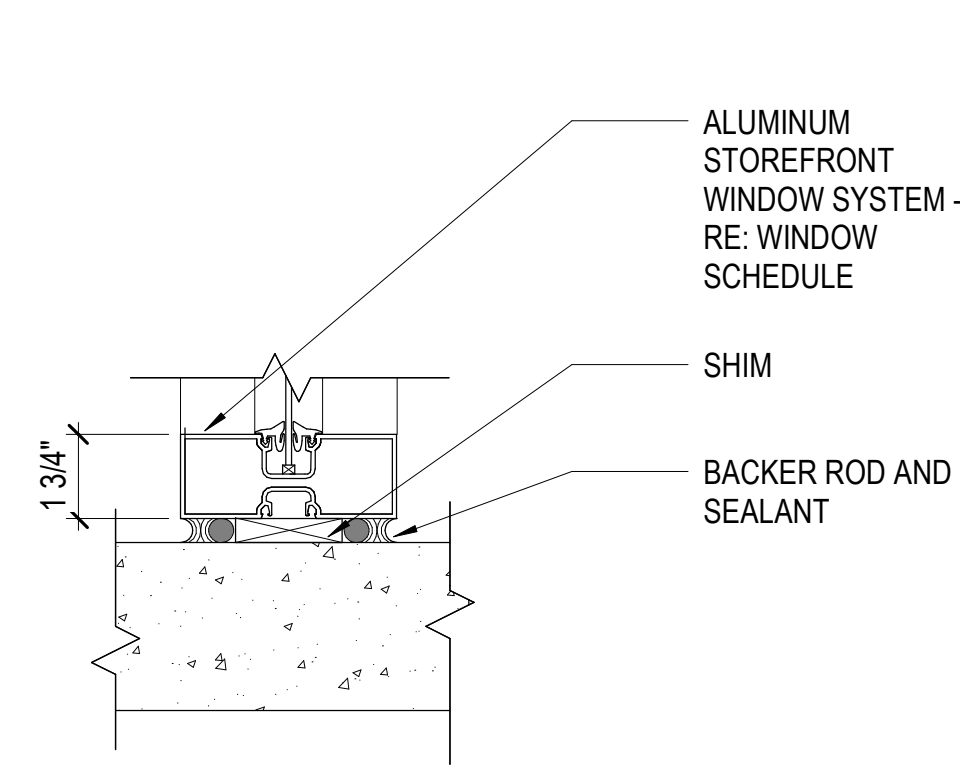
Window Frames: Frames are aluminum storefront, UNO. Finish as specified.

- Glass Type: Provide the following glass types, UNO:
- Exterior Window/Storefront/Curtainwall Systems: 14 (1" Low-E Coated, Clear Tempered Insulated Glass)
 - Interior Window Systems: 2 (6mm Clear Tempered Float Glass)

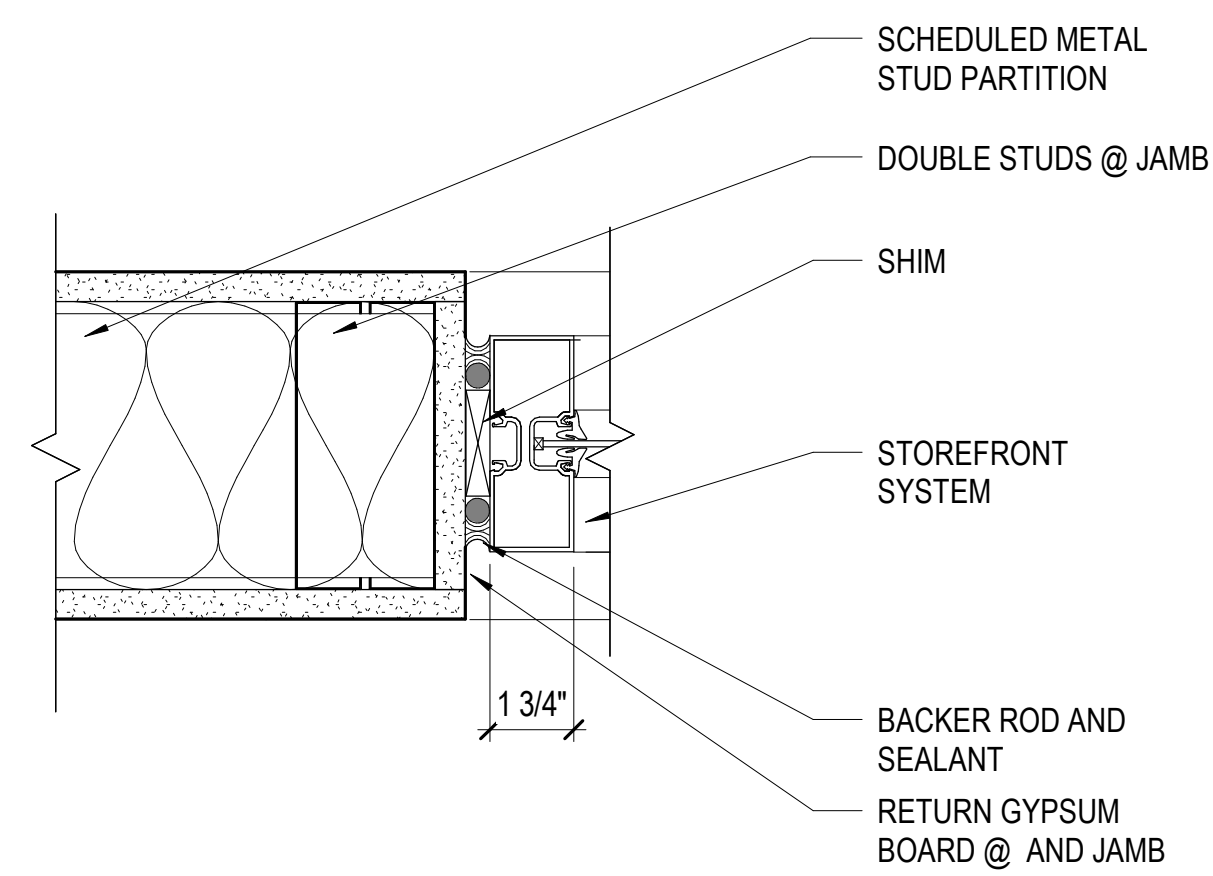
End Dams: Provide end dams at sill flashing.

Coordination: Coordinate all trades to provide complete systems, including, but not limited to framing, glazing, sealants, flashing, brake metal and backing.

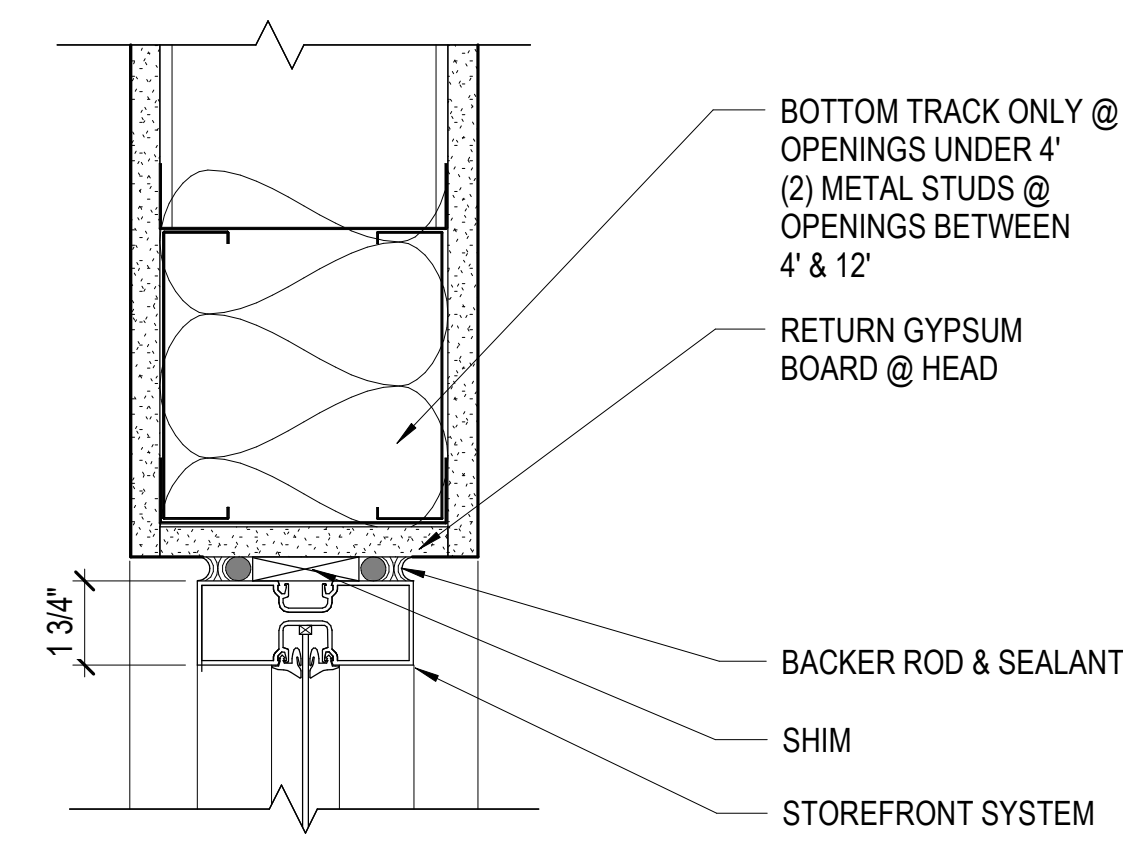
GLAZING SCHEDULE	
T01	6mm (1/4") CLEAR TEMPERED FLOAT GLASS



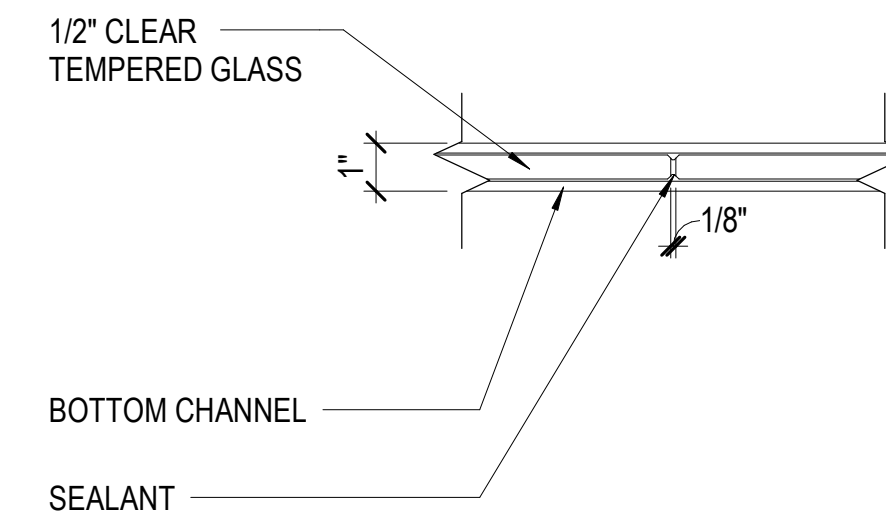
D2 SILL DETAIL
SCALE: 3" = 1'-0"



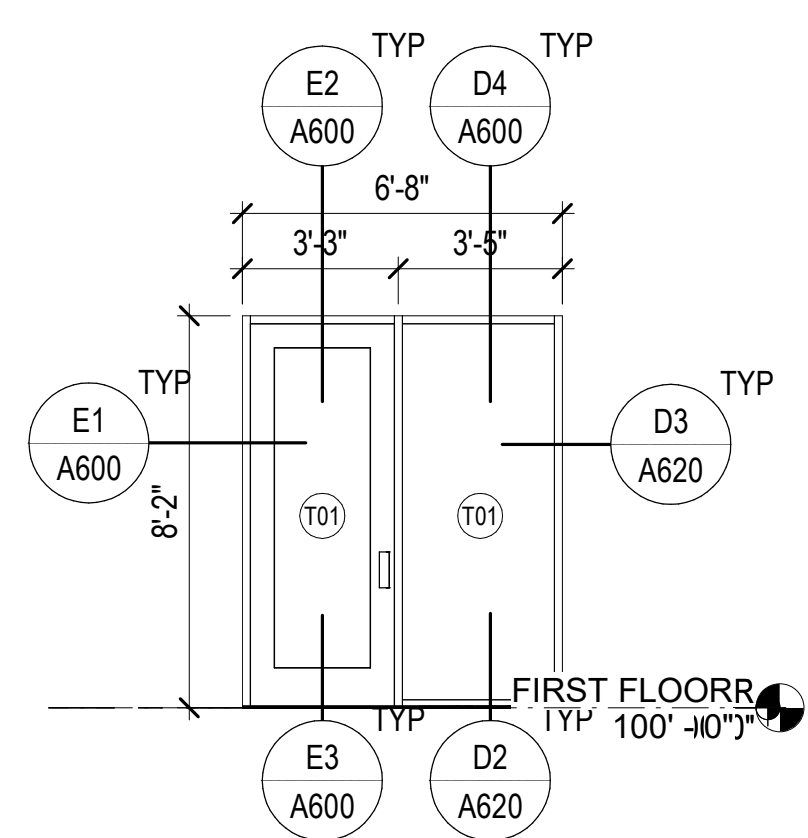
D3 JAMB DETAIL
SCALE: 3" = 1'-0"



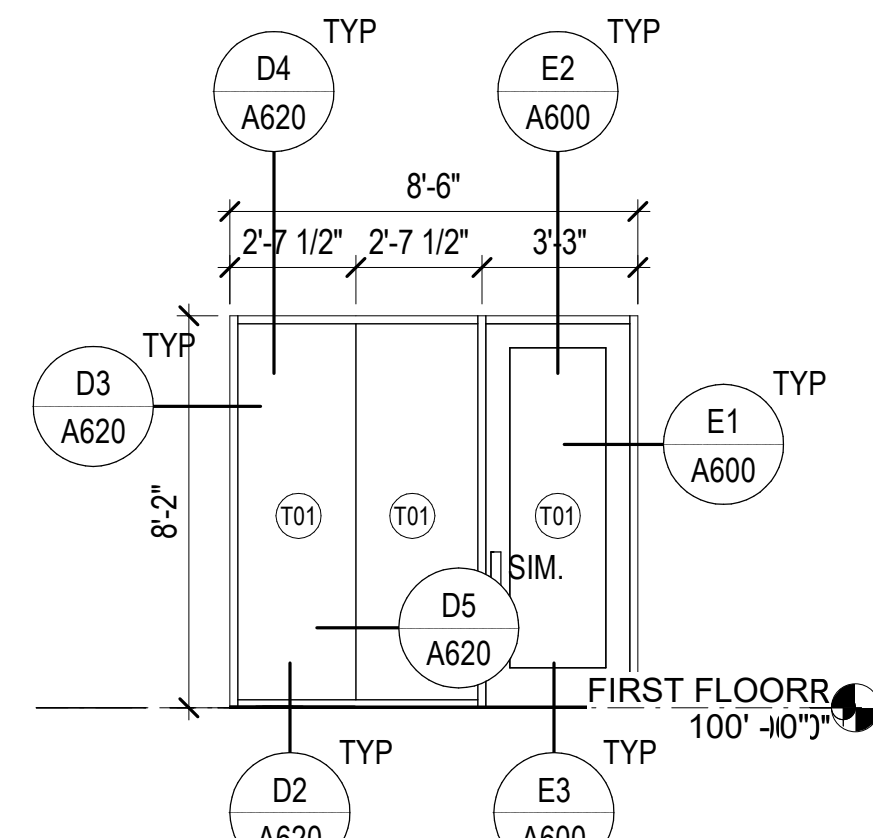
D4 HEAD DETAIL
SCALE: 3" = 1'-0"



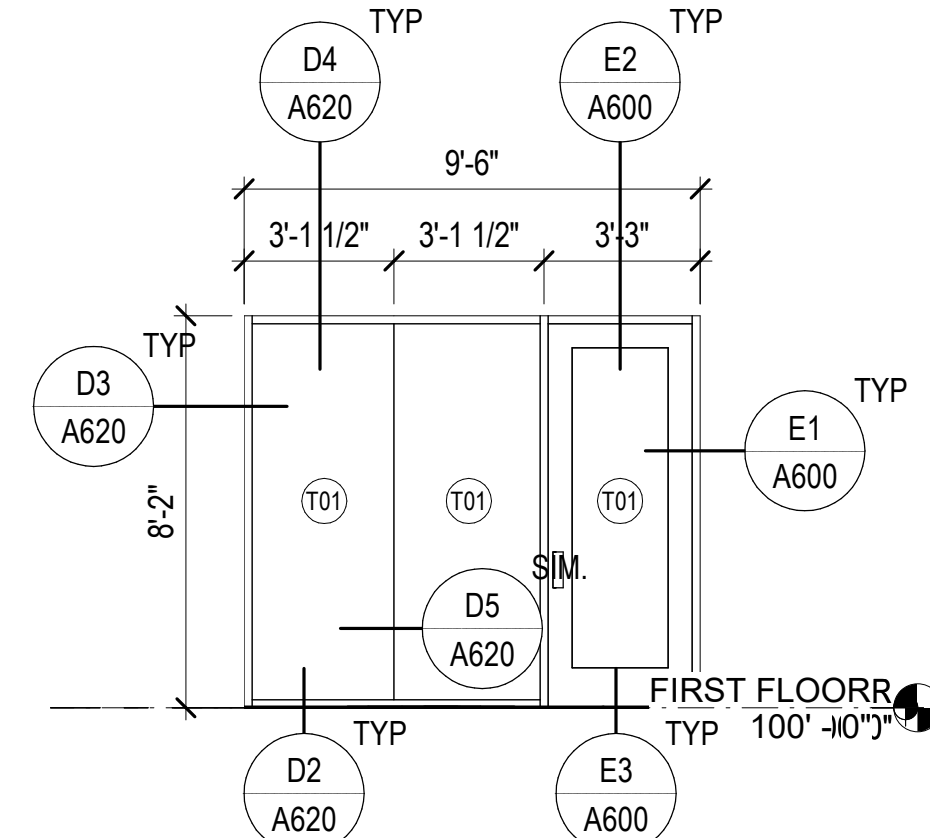
D5 FIXED GLAZING @ BUTT JOINT
SCALE: 3" = 1'-0"



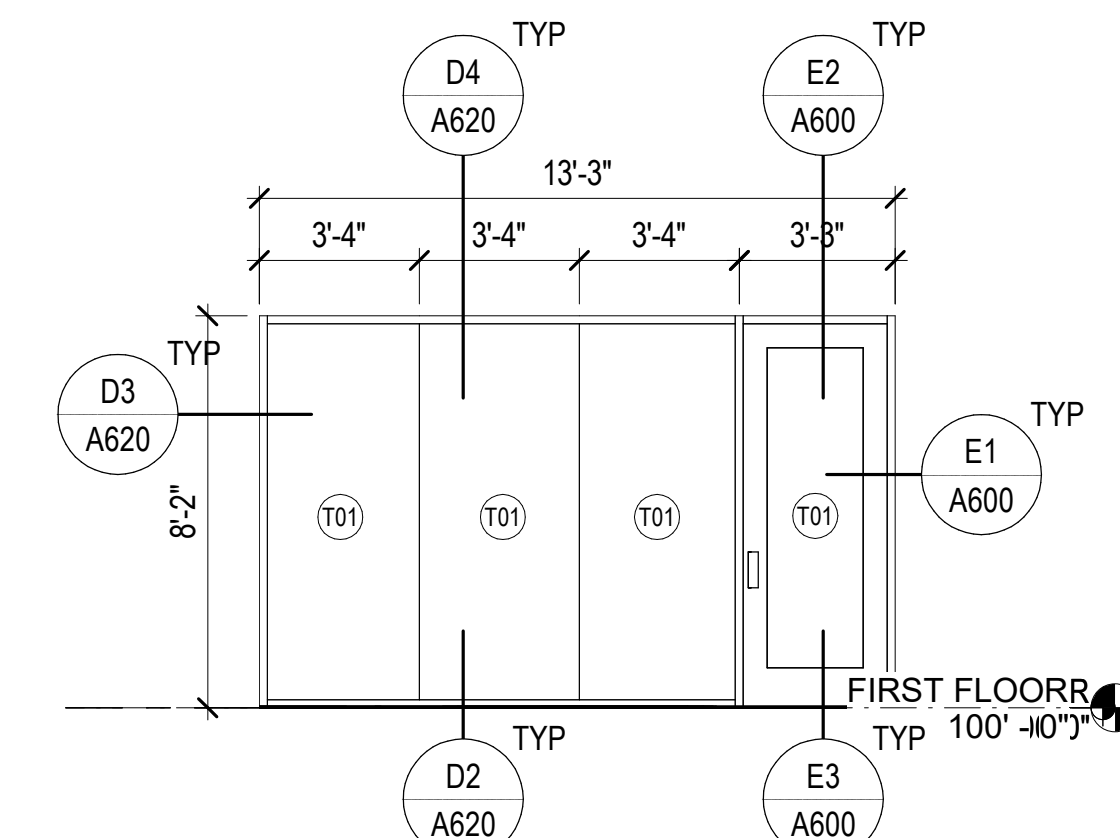
WINDOW TYPE 5
SCALE: 1/4" = 1'-0" STOREFRONT



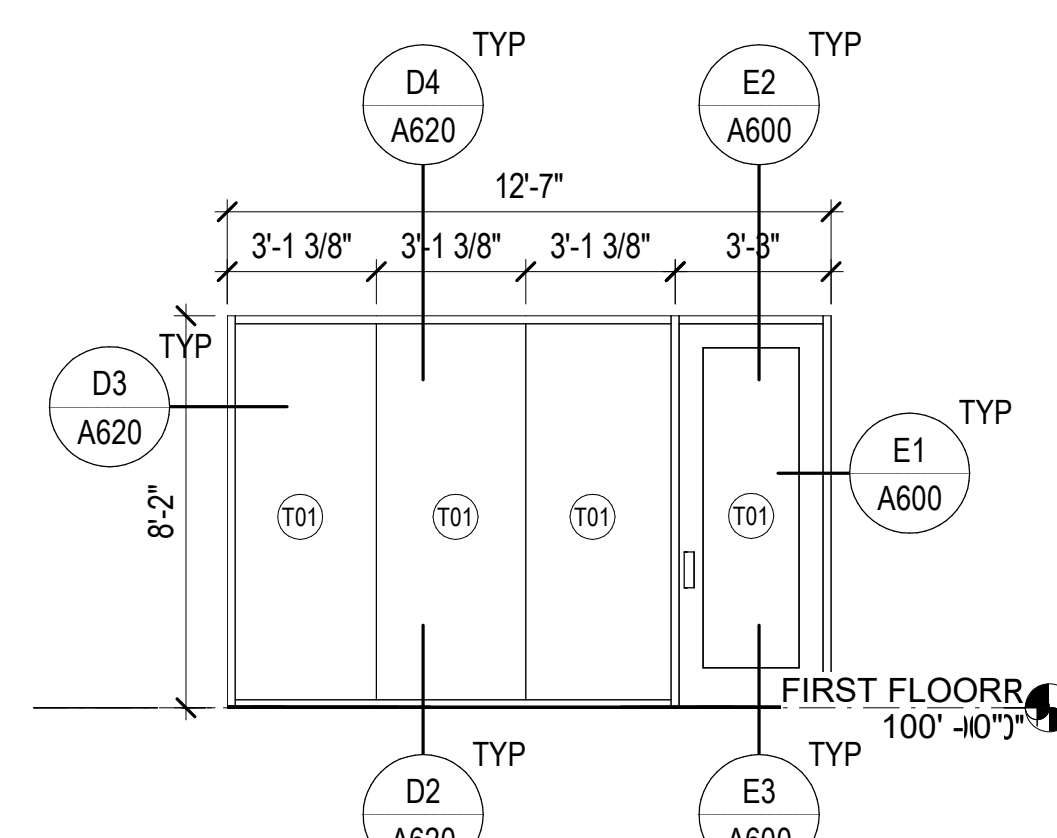
WINDOW TYPE 4
SCALE: 1/4" = 1'-0" STOREFRONT



WINDOW TYPE 3
SCALE: 1/4" = 1'-0" STOREFRONT



WINDOW TYPE 2
SCALE: 1/4" = 1'-0" STOREFRONT



WINDOW TYPE 1
SCALE: 1/4" = 1'-0" STOREFRONT

SPECULATIVE TI

LINDON TECH 5
1971 W 700 N
LINDON, UT 84042

©2021 MHTN ARCHITECTS, INC.
Confidentiality Notice
This document is intended for use on the Project identified herein by individuals and companies involved in the design, permitting, bidding and construction of the project. All rights reserved. The grantee hereby agrees to distribute and reproduce this document for the project purposes only. Distribution, printing or copying this document for purposes other than those indicated is strictly prohibited. If a digital copy of this document is received in error, please delete it.



MHTN PROJECT NO: PROJ #
Original Drawing is 30" x 42". Do not scale contents of this drawing.
REVISIONS:
CONTRACTOR TO VERIFY DRAWINGS IN FIELD USE REFLECT LAST REVISION DATE.

NO.	DATE	DESCRIPTION

ISSUE:
PERMIT SET
12 JULY 2021
SHEET NAME:
WINDOW TYPES & DETAILS

SHEET NUMBER:
A620

A

B

C

D

C:\Users\SumanM\Documents\AC1_2021055_Lincoln_Tech_Speculative_T1_CENTRAL_Sheramoose.rvt 7/12/2021 2:22:20 PM

1

2

3

4

5

FINISH SCHEDULE												
RM #	ROOM NAME	FLOOR FINISH	BASE FINISH	WALL				CEILING FINISH	CABINET FINISH	COUNTER TOP FINISH	REMARKS	RM #
				NORTH WALL FINISH	EAST WALL FINISH	SOUTH WALL FINISH	WEST WALL FINISH					
100	LOBBY	WD1	RB	P1	P1	P1	P1	OTSP				100
101	COPY	WD1	RB	P1	P1	P1	P1	ACP1				101
102	STORAGE	SC1	RB	P1	P1	P1	P1	OTS				102
103	CONFERENCE	CT1	RB	P1	P1	P1	P1	ACP1/OTSP				103
104	OFFICE											104
105	OFFICE	CT1	RB	P1	P1	P1	P1	ACP1				105
106	OFFICE	CT1	RB	P1	P1	P1	P1	ACP1				106
107	OFFICE	CT1	RB	P1	P1	P1	P1	ACP1				107
108	OPEN OFFICE	CT1	RB	P1	P1	P1	P1	ACP1/OTSP/GB 1	PLAM SS1 1			108
109	OPEN OFFICE	CT1	RB	P1	P1	P1	P1	ACP2/OTSP				109
110	BREAK ROOM	WD1	RB	P1	P1	P1	P1/WT1	GB1/OTSP	PLAM SS1 1			110
111	OFFICE	CT1	RB	P1	P1	P1	P1	ACP1				111
112	CONFERENCE	CT1	RB	P1	P1	P1	P1	ACP1/OTSP				112

FINISH SCHEDULE GENERAL NOTES

RE: Axxx for typical floor finish transition details

RE: A651 for Floor Pattern Plans

Finishes

Provide finishes as indicated in the finish schedule. Refer to interior elevations, where drawn, for clarification, dimensions and additional information. The absence of an interior elevation does not override the requirement to provide the finish indicated in the schedule.

Where a finish is partly hidden by an object, extend that finish behind the object.

Where multiple finishes are scheduled, refer to interior elevations and floor pattern plans for transition locations.

Floor: Extend floor finishes into knee spaces at cabinets, under counters and under all other objects, which in a floor plan view may obscure the extent of the floor finish.

Base: Where base is scheduled for a room, provide base at all walls whether shown in elevation, including alcoves and offsets. At gypsum board walls, if no base is scheduled or shown in interior elevations, provide 4" rubber base.

Walls: Extend wall finishes behind cabinets, behind mirrors, and into other areas that may be hidden in elevation views.

Ceilings: Paint areas above suspended ceilings that are visible from below. Color: black.

Doors, Windows and Frames: Unless specified to be pre-finished at the factory, provide paint finish on hollow metal doors and hollow metal door and window frames. Color as indicated, or if not indicated, then as selected by the Architect. Provide specified stain finish at wood doors.

Unfinished and Primed Metal Surfaces: Paint all unfinished and primed metal surfaces that are visible with the specified system(s). Color by Architect.

Standing and Running Trim: Provide specified stain finish at wood trim.

Floor Finish Transitions at Doors: Locate floor finish material transitions that occur at doors under the center of the door, UNO.

Floor Drains: Coordinate location of floor drains with Plumbing drawings.

Typical Colors, UNO:

Walls: P1
Hollow Metal Frames: DF1

Seaming Diagrams: Provide diagrams for broadloom carpet and sheet flooring.

Wall Covering Seams: Apply wall covering to minimize seams, to provide equal panels and locate seams no closer than 1'-0" from corners.

FINISH SCHEDULE LEGEND

FLOOR FINISHES

SC1 - SEALED CONCRETE

CT1 - CARPET TILE 1

MANUFACTURER: INTERFACE
STYLE: AERIAL AE311
COLOR: 104672 GREIGE
SIZE: 25 CM X 1 M
INSTALLATION PATTERN: TBD

WD1 - RESILIENT WOOD FLOOR 1

MANUFACTURER: SHAW FLOORS
STYLE: 5TH AND MAIN RESILIENT BREAKER'S POINT 12
COLOR: SALT CREEK 00500
SIZE: 6" X 48"

BASES

RB - RUBBER BASE

MANUFACTURER: ROPPE
COLOR: 123 CHARCOAL

WALL FINISHES

P1 - PAINTED GYPSUM BOARD, SHERWIN WILLIAMS, PURE WHITE SW 7005

WT1 - WALL TILE 1

MANUFACTURER: DAL TILE
STYLE: REVVALIA REMIX
COLOR: WHITE RV18
SIZE: STRUCTURAL - 3" X 4"
GROUT: MAPEI - 38 AVALANCHE

CEILINGS

ACP1 - 24" X 24" ACOUSTICAL CEILING PANEL
ACP2 - 24" X 48" ACOUSTICAL CEILING PANEL

GB1 - PAINTED GYPSUM BOARD, SHERWIN WILLIAMS, PURE WHITE SW7005

OTS - OPEN TO STRUCTURE

OTSP - OPEN TO STRUCTURE, PAINTED - PURE WHITE SW7005

CABINET

PLAM1 - PLASTIC LAMINATE 1

MANUFACTURER: WILSONART
COLOR: BEACH BIRCH Y0727-38

COUNTER TOP

SS1 - SOLID SURFACE 1

MANUFACTURER: MSI
COLOR: CALACATTA PRADO

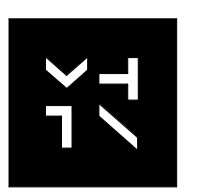
HM DOOR FRAME

DF1 - PAINTED FINISH, COLOR: SW 7660 EARL GRAY, TYP UNO

DOORS

D1 - WOOD DOOR, CLEAR FINISH, TYP UNO

D3 - HM DOOR, PAINTED FINISH, COLOR: DF1, TYP UNO



MHTN ARCHITECTS, Inc. 280 South 400 West Suite 250 Salt Lake City, Utah 84101 Telephone (801) 585-6700 www.mhtn.com

SPECULATIVE T1
LINDON TECH 5
1971 W 700 N
LINDON, UT 84042

©2021 MHTN ARCHITECTS, INC.
Confidentiality Notice
This document is intended for use on the Project identified herein by individuals and companies involved in the design, permitting, bidding and construction of the Project. MHTN ARCHITECTS, INC. grants limited rights of distribution and reproduction of this document for project purposes only. Distribution, printing or copying this document for purposes other than those indicated is strictly prohibited. If a digital copy of this document is received in error, please delete it.



MHTN PROJECT NO: PROJ #

Original Drawing is 36" x 42". Do not scale contents of this drawing.

REVISIONS:
CONTRACTOR TO VERIFY DRAWINGS IN FIELD USE REFLECT LAST REVISION DATE.

NO. DATE DESCRIPTION

ISSUE PERMIT SET 12 JULY 2021

FINISH SCHEDULE

SHEET NUMBER

A640

PATTERN PLAN GENERAL NOTES

RE: A640 for the Finish Schedule




RE: Axxx for typical floor finish transition details

RE: Structural drawings for recessed slabs.

Floor Finish Transitions at Doors: Locate floor finish material transitions that occur at doors under the center of the door, UNO.

Floor Drains: Coordinate location of floor drains with Plumbing drawings.

LEGEND - FLOOR PATTERN

-  WD1 - RESILIENT WOOD FLOOR 1
-  CT1 - CARPET TILE 1
-  SC1 - SEALED CONCRETE

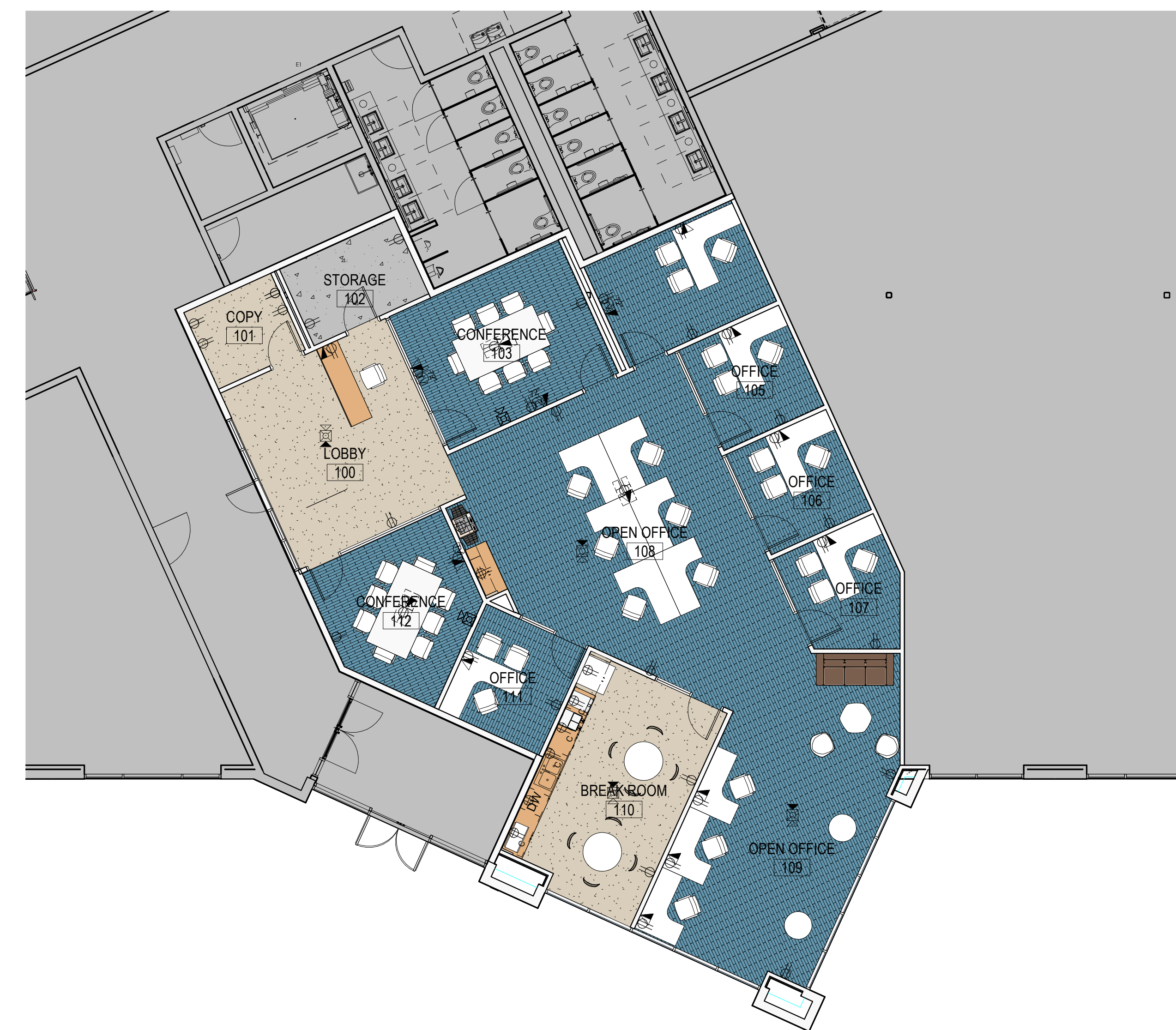
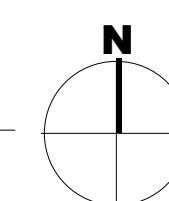


MHTN
ARCHITECTS
MHTN Architects, Inc.
280 South 400 West
Suite 250
Salt Lake City, Utah 84101
Telephone (801) 585-6700
www.mhtn.com



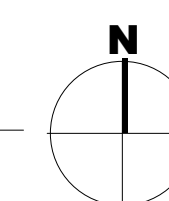
FIRST FLOOR FURNITURE PLAN

SCALE: 1/8" = 1'-0" 0 4'-0" 8'-0" 16'-0"



FIRST FLOOR FINISH PLAN

SCALE: 1/8" = 1'-0" 0 4'-0" 8'-0" 16'-0"



C:\Users\Summa\Documents\A61_2021\656_Lindon_Tech_Speculative_TI_CENTRAL_Schematic.rvt
7/12/2021 2:22:25 PM

SPECULATIVE TI

LINDON TECH 5
1971 W 700 N
LINDON, UT 84042

©2021 MHTN ARCHITECTS, INC.
Confidentiality Notice
This document is intended for use on the Project identified herein by individuals and companies involved in the design, permitting, bidding and construction of the project. MHTN ARCHITECTS, INC. grants neither title to, distribution and reproduction of this document for any purpose other than those indicated herein. Distribution, printing or copying of this document for purposes other than those indicated is strictly prohibited. If a digital copy of this document is received in error, please delete it.
SEAL



ISSUE: PERMIT SET
12 JULY 2021

REVISIONS:

CONTRACTOR TO VERIFY DRAWINGS IN FIELD USE REFLECT LAST REVISION DATE.

NO.	DATE	DESCRIPTION

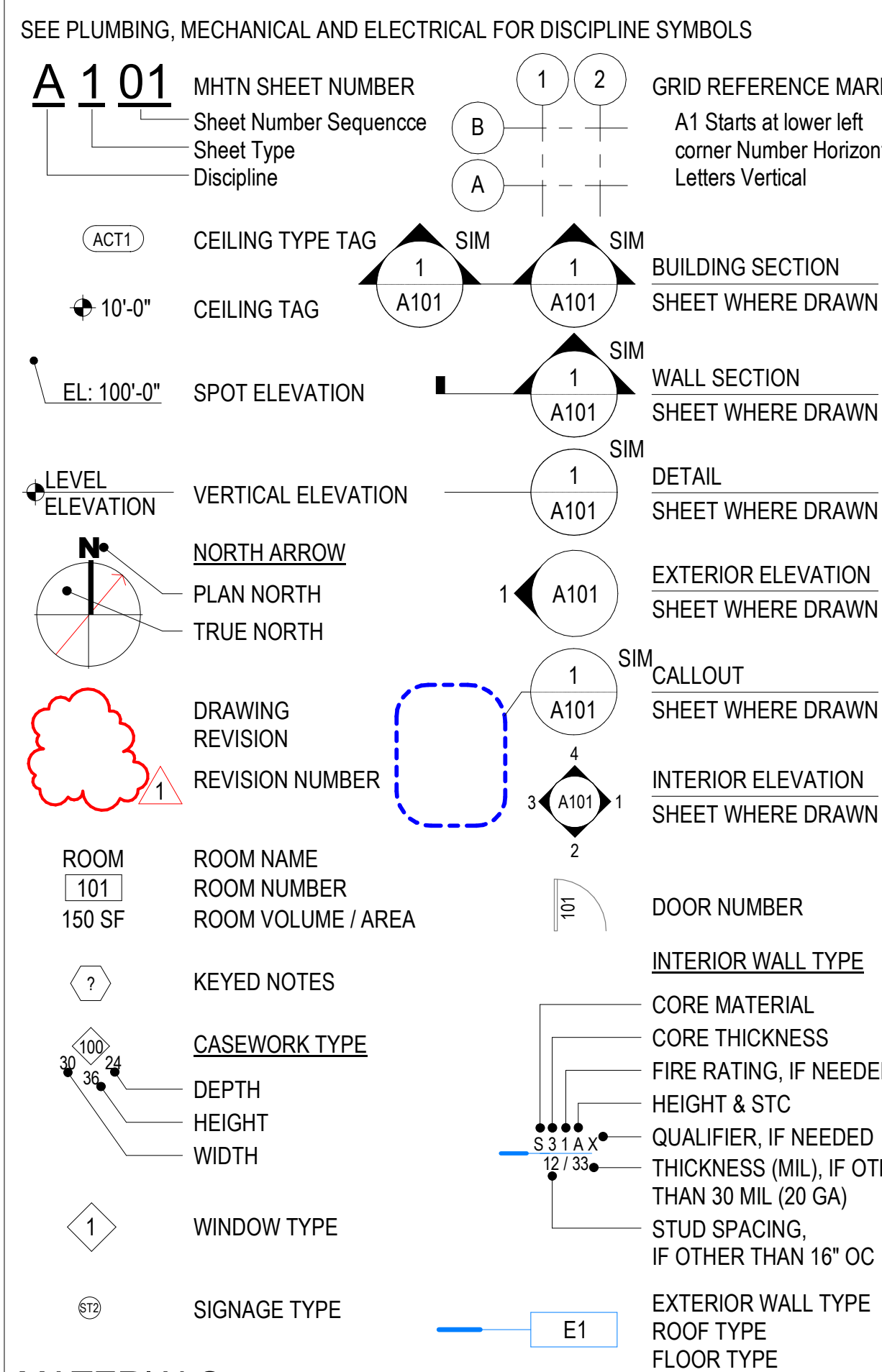
SHEET NAME:
**FIRST FLOOR
PATTERN PLAN
AND FURNITURE
PLAN**

SHEET NUMBER:
A651

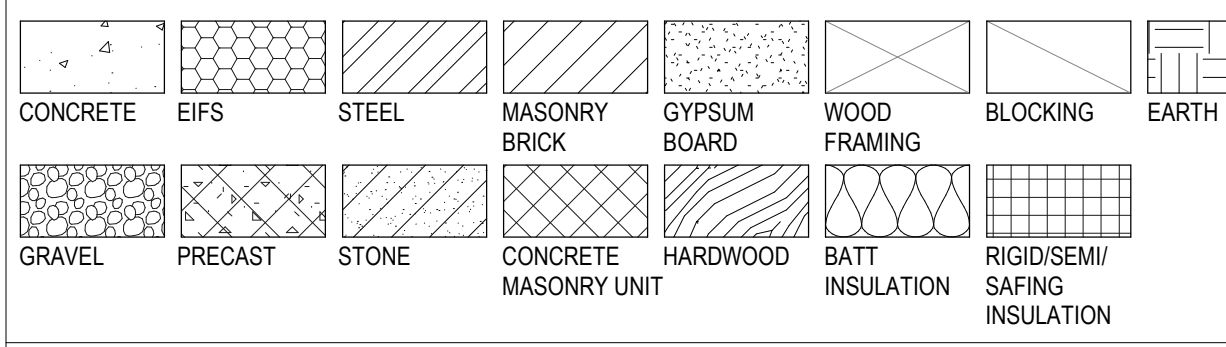
ABBREVIATIONS

Table of abbreviations for construction terms, including AC (AIR CONDITIONING), AFF (ABOVE FINISH FLOOR), ALT (ALTERNATE), ALUM (ALUMINUM), APPROX (APPROXIMATE), ARCH (ARCHITECTURAL), etc.

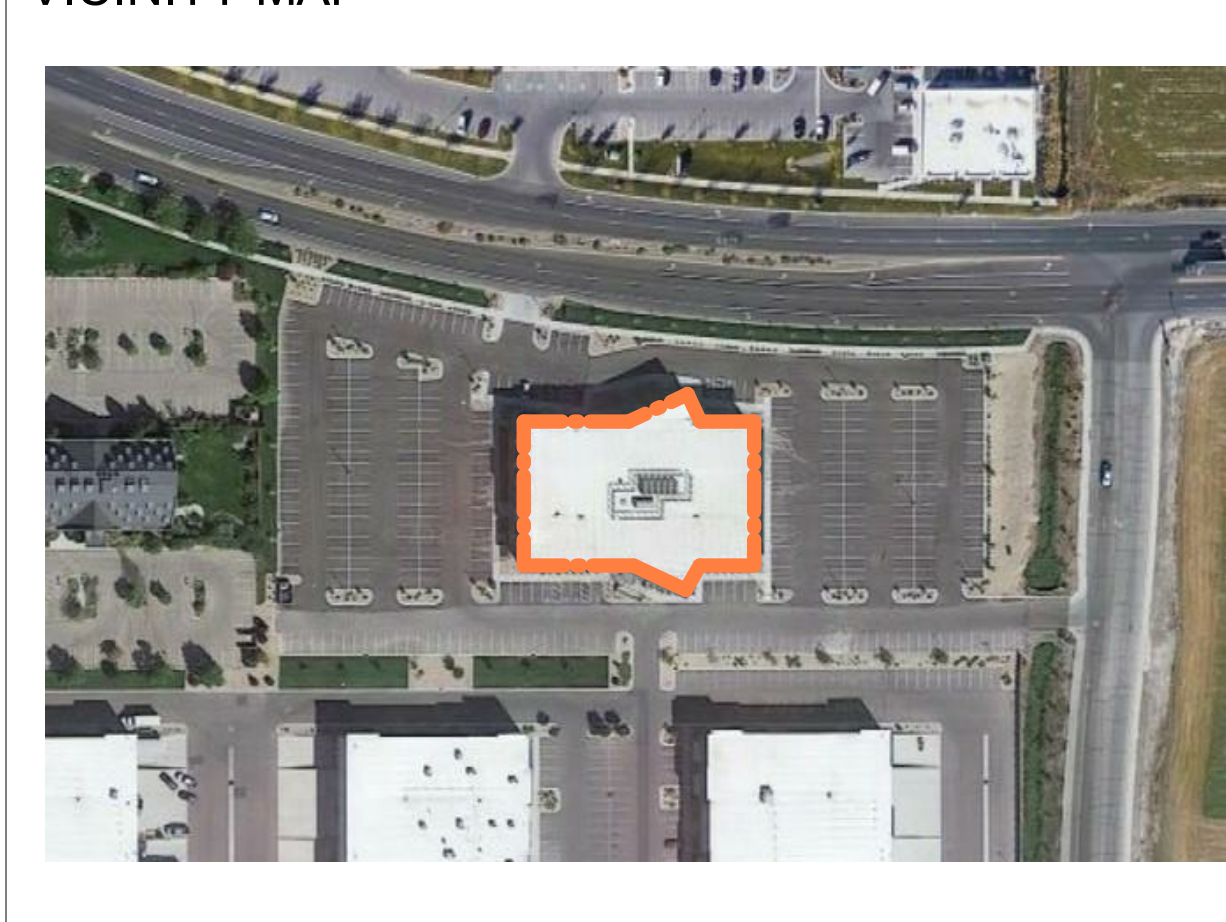
GENERAL SYMBOLS



MATERIALS



VICINITY MAP



SPECULATIVE TI LINDON TECH 5 1971 W 700 N LINDON, UT 84042

PERMIT SET 12 JULY 2021

PROJECT DATA

Table containing project data such as CIVIL RIGHTS (ADA Standards for Accessible Design, 2010), APPLICABLE CODES (International Building Code, etc.), and OCCUPANCY CLASSIFICATION (B).

Table for Fire-Resistance Ratings for Building Elements (IBC Table 601), listing Construction Type, Primary Structural Frame, Exterior Bearing Walls, etc.

Table for Climate Zone, showing Climate Zone: 5.

INDEX TO DRAWINGS -PERMIT SET

Table listing drawing categories and sheet numbers: GENERAL (G001 INDEX SHEET), ARCHITECTURAL (A101 FIRST FLOOR PLAN AND REFLECTED CEILING PLAN), ELECTRICAL (E000 ELECTRICAL GENERAL NOTES), etc.

PROJECT GENERAL REMODEL NOTES

Verify in Field (VIF): Field verify all dimensions and conditions at the site before submitting a bid or proceeding with any portion of the work. Cut and Patch: Cut and patch existing building construction as required. Conflicts: Whenever questions arise or conditions are encountered which are not covered by, or are in conflict with, the contract documents, consult with the Architect prior to taking any further action.

PROJECT GENERAL NOTES

Building Codes: Comply with requirements of the adopted editions of the international code council codes, the codes and standards referenced within the ICC codes and the Americans with Disabilities Act. Dimensions: Metal stud walls are dimensioned to face of metal stud, unless noted otherwise. Masonry walls are dimensioned to face of masonry.

Protection & Cleaning: Contain all construction activity within construction barricades or fences. Protect owner's existing facilities and property adjacent to new construction. During and after work of this contract is complete, clean existing areas affected by the work to the owner's satisfaction.

Repair & Replacement: Repair or replace existing facilities or property damaged by new construction. Match existing surface finish or material. Patch & Repair: Patch and repair existing walls, floors, ceilings, landscaping, paving or other surfaces affected by demolition to match the existing material and finish.

Core Drilling Walls and Slabs: Use ground penetrating radar or other approved method to scan concrete over metal deck, concrete suspended slabs, masonry walls, and concrete walls to locate rebar prior to core drilling any holes. Holes shall be located to avoid rebar detected. All openings and groups of openings shall be reinforced as shown on the structural drawings. Submit openings not shown on the structural drawings to the Structural Engineer for review prior to drilling.

Specifications: Refer to the specifications for descriptions of products, materials and systems. The terms "SEE SPECS" "RE SPECS" or similar references to the specifications have been omitted from drawing notes, but the requirement is still the same, to refer to the technical specifications for descriptions, installation requirements and other requirements as described therein.

Attachment to Steel Deck: Do not use steel deck that doesn't have concrete fill to support loads from plumbing, fire sprinklers, HVAC ducts, light fixtures, architectural elements or equipment of any kind, unless specifically noted otherwise. Lightweight acoustical ceilings with a total weight per wire not exceeding 50 pounds may be hung from the steel roof deck. Stagger hangers to distribute the load over multiple deck flutes.

Attachment to Open Web Steel Joists and Girders: All concentrated loads greater than 100 pounds and not meeting the requirements of the paragraph below shall be located within 6 inches of the joist or girder panel points or the joist or girder shall be reinforced with an additional web member. Refer to the general structural notes and the "typical detail at additional concentrated point load" on the structural drawings.

Attachment to Steel Beams: Bracing for seismic loads shall attach within 4" of the top flange of the beam, unless noted otherwise.

CONSULTANTS

Table listing consultants: ARCHITECTURE (MHTN ARCHITECT, INC.), MECHANICAL (MSS-84), ELECTRICAL (JT ELECTRIC).

APPROVALS

Table for approvals with columns for APPROVERS NAME, TITLE, and DATE.



SPECULATIVE TI LINDON TECH 5 1971 W 700 N LINDON, UT 84042



MHTN PROJECT NO PROJ # VIEW AND PRINT THIS DRAWING IN COLOR Original drawing is 30 x 42. Do not scale contents of this drawing.

Table for REVISIONS with columns for NO., DATE, and DESCRIPTION.

ISSUE PERMIT SET 12 JULY 2021

SHEET NAME INDEX SHEET

SHEET NUMBER G001

LIFE SAFETY PLAN GENERAL NOTES

References to sheets below are provided to aid in navigating the drawings.

RE: G500 for Interior Wall Types which indicate ratings, reference termination details, and require rated wall identification.

RE: G300 for Fire Penetration Details

RE: G310 for UL, GA, and/or IBC reference numbers for rated assemblies

RE: G400 for floor/ceiling and roof/ceiling rated assemblies

RE: A600 for the Door Schedule and door ratings.

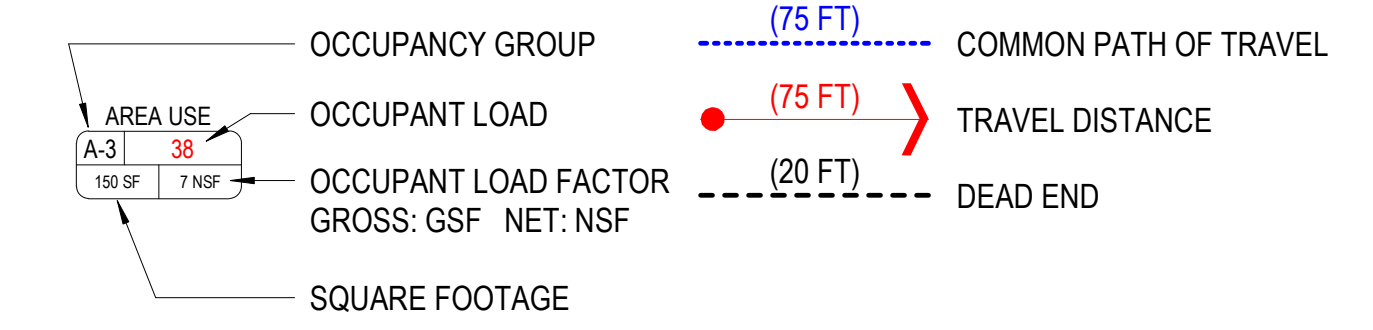
RE: A620 for Window Types and window ratings.

Include one of the following two statements:

Exit Width Capacity: Exit width capacities are based on 0.3" per occupant at stairways and 0.2" per occupant at other means of egress components.

Exit Width Capacity: This project includes an automatic sprinkler system and an emergency voice/alarm communications system. Exit width capacities are based on 0.2" per occupant at stairways and 0.15" per occupant at other means of egress components.

LEGEND - LIFE SAFETY



AREA FUNCTION (IBC TABLE 1004.1.2)

ASSEMBLY, UNCON

BUSINESS

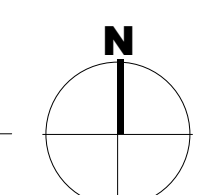
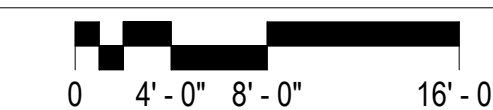


C:\Users\SarahM\Documents\A31_2021\655_Lincoln_Tech_Speculative_TI_CENTRAL_Saramonoe.rvt 7/12/2021 2:22:30 PM



FIRST FLOOR LIFE SAFETY PLAN

SCALE: 1/8" = 1'-0"



SPECULATIVE TI

LINDON TECH 5

1971 W 700 N
LINDON, UT 84042

ISSUE CONFIDENTIALITY NOTICE: This document is intended for use on the Project identified herein by individuals and companies involved in the design, permitting, bidding and construction of the project. MHTN ARCHITECTS, Inc. grants written rights to distribute and reproduce this document for business purposes only. Distribution, printing or copying this document for purposes other than those indicated is strictly prohibited. If a digital copy of this document is received in error, please delete it.

SEAL



MHTN PROJECT NO: PROJ #

Original Drawing is 30 x 42. Do not scale contents of this drawing.

REVISIONS: CONTRACTOR TO VERIFY DRAWINGS IN FIELD USE REFLECT LAST REVISION DATE.

Table with columns for NO., DATE, and DESCRIPTION.

ISSUE: PERMIT SET

12 JULY 2021

SHEET NAME:

FIRST FLOOR LIFE SAFETY PLAN

SHEET NUMBER

G101

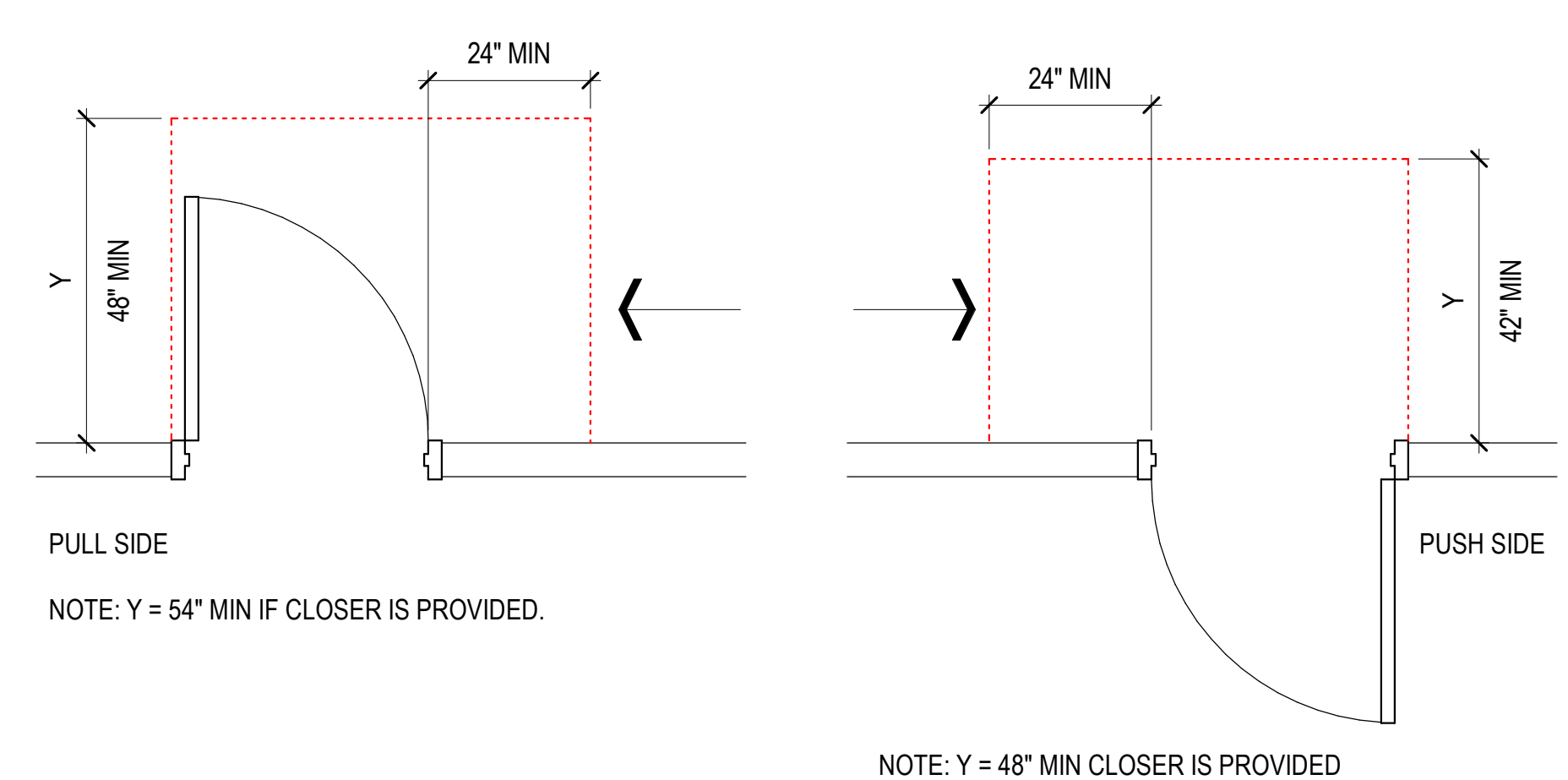
**MOUNTING HEIGHTS & CLEARANCES
GENERAL NOTES**

Diagrams on this sheet incorporate the ADA Standard, 2010 edition and ICC/ANSI A117.1, 2009 edition requirements for accessibility. The most restrictive requirement is shown where the two standards differ.

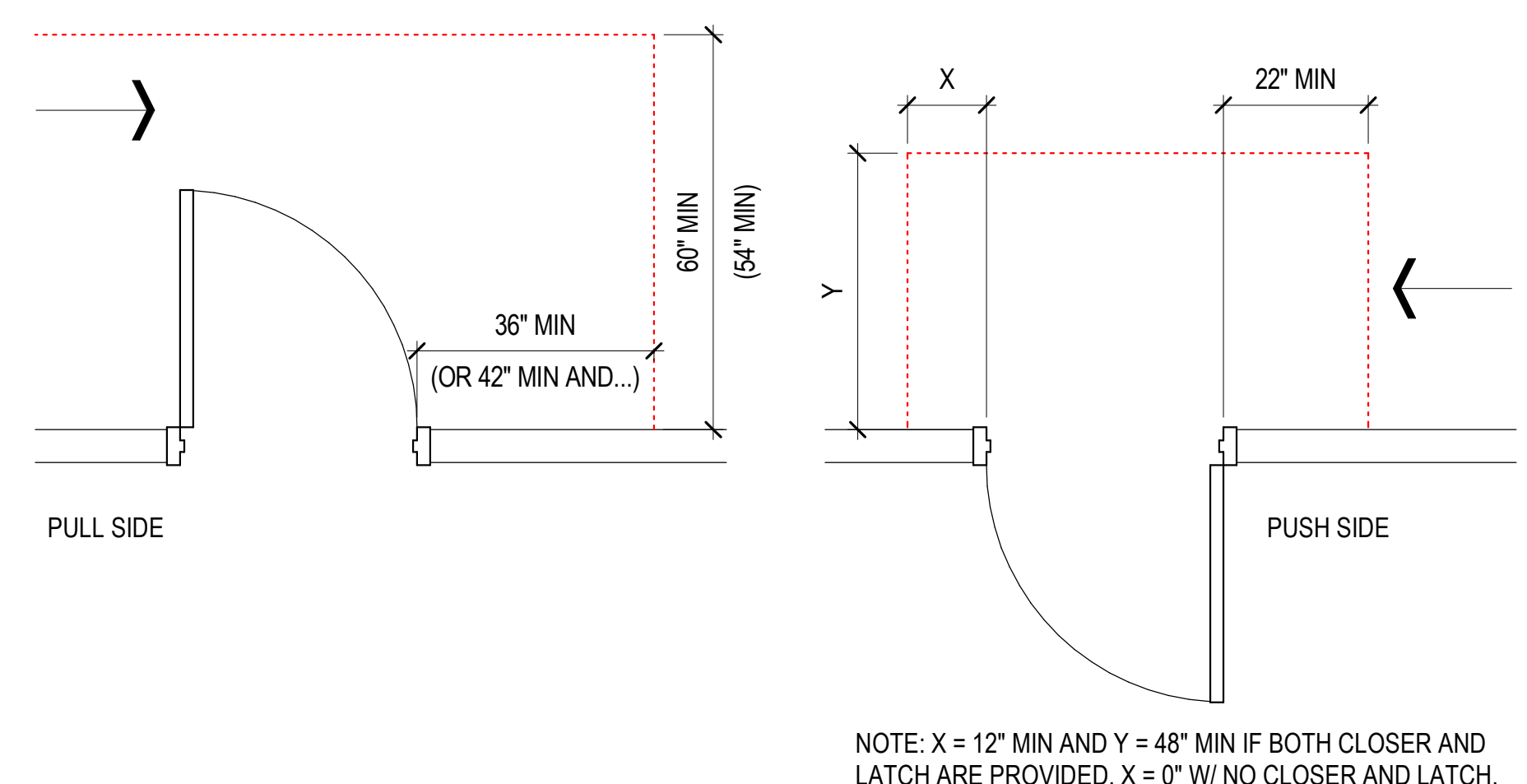
The purpose of this sheet is to provide general clearance, size and mounting height dimensions. If other drawings provide different information, that doesn't violate the accessibility standards, that information shall govern, however, nothing shown herein shall supersede the requirement of the standards listed above, nor of the IBC.

Prior to installation, coordinate toilet and bath accessory mounting heights with manufacturer's recommended heights and adjust as required to comply with ADA & ANSI requirements.

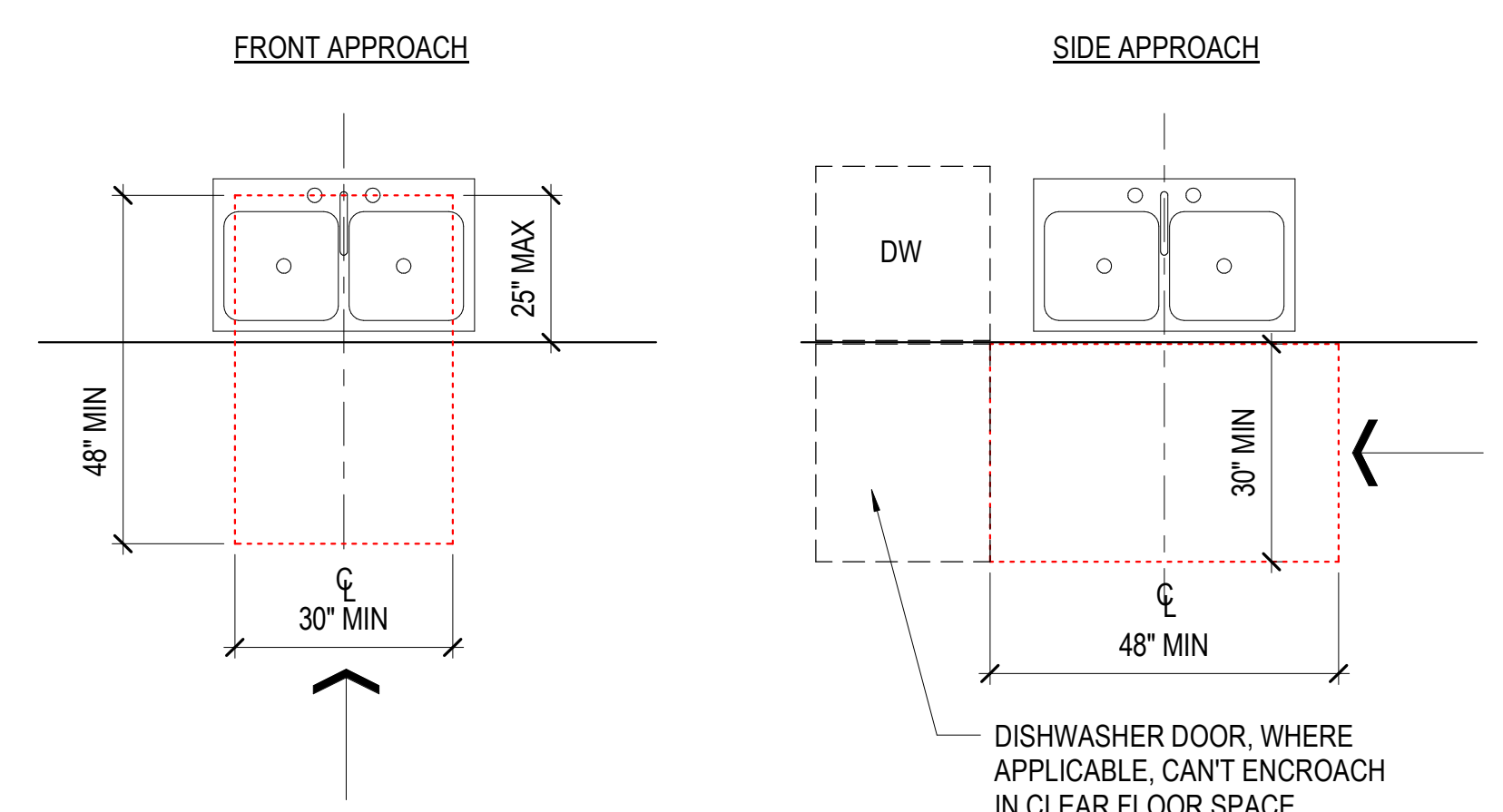
Where the accessibility standards indicate ranges of dimensions, or minimum or maximum dimensions, the dimensions on this sheet have been modified to indicate the preferred or the most restrictive of the dimensions. Where it is impractical to comply with a dimension, the dimension may be adjusted after review with the Architect and, provided the proposed change does not violate the accessibility standards.



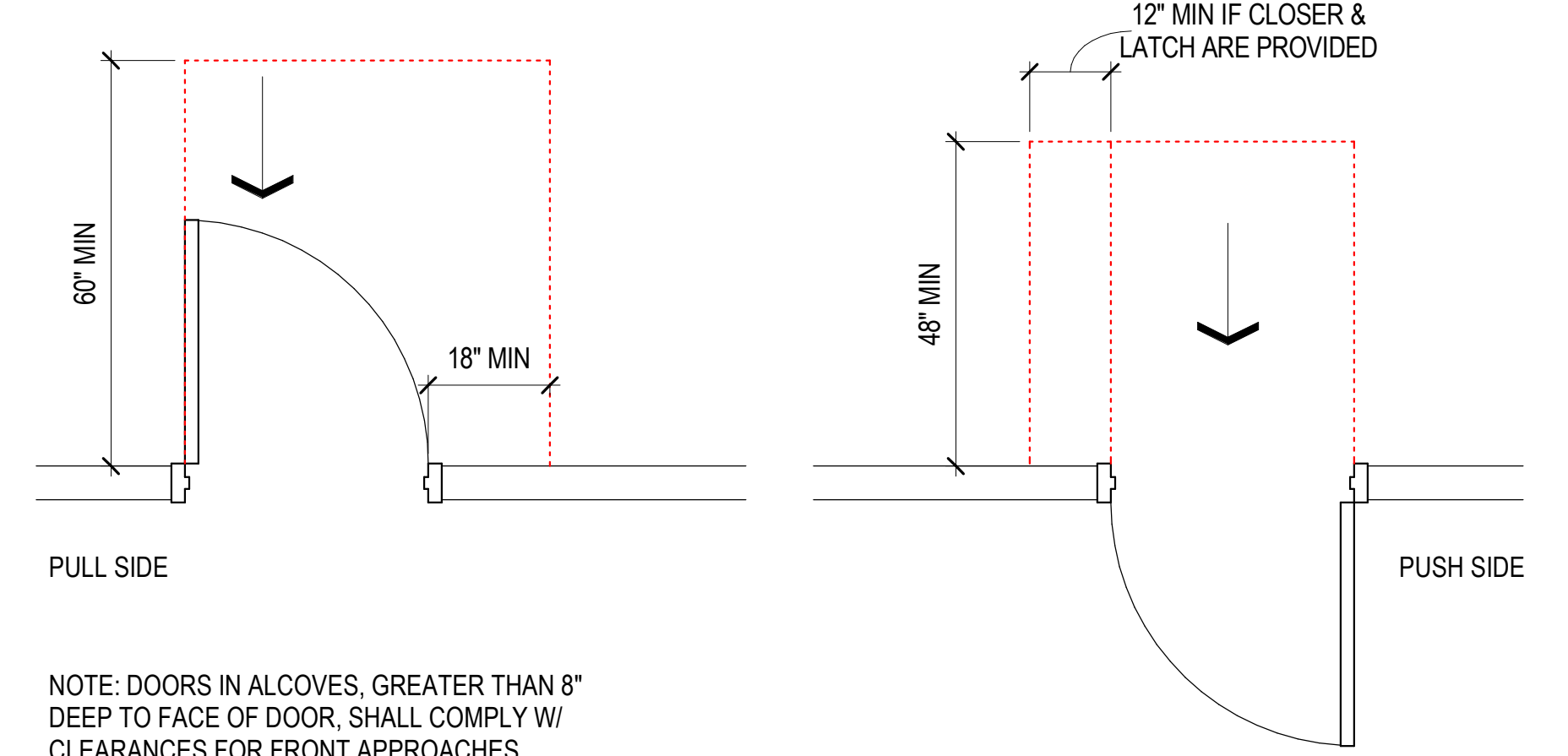
C3 **LATCH SIDE APPROACHES - SWINGING DOORS**
SCALE: 1/2" = 1'-0"



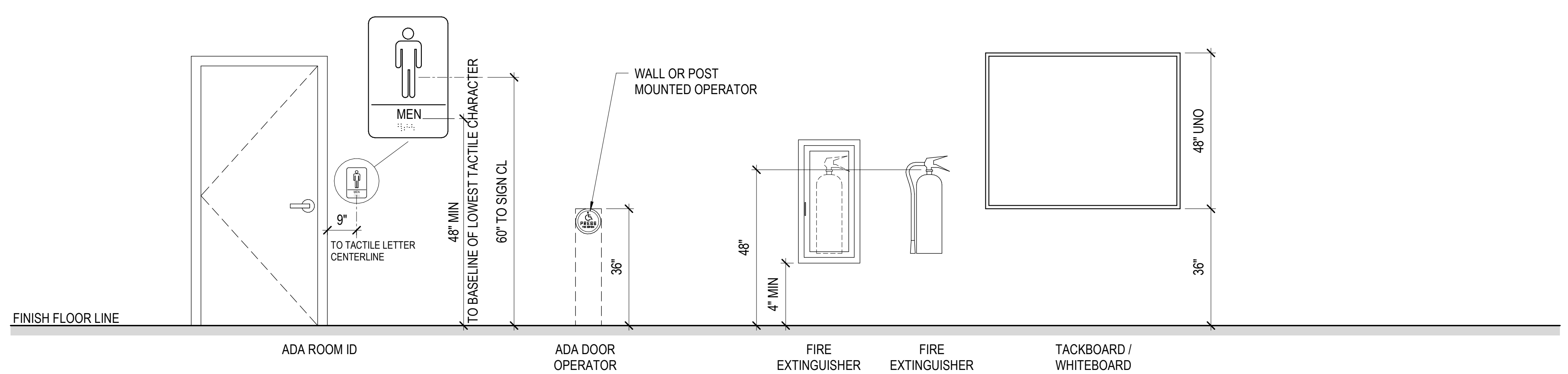
C4 **HINGE SIDE APPROACHES - SWINGING DOORS**
SCALE: 1/2" = 1'-0"



4 **SINK APPROACHES AND CLEARANCE**
SCALE: 1/2" = 1'-0"



D4 **FRONT APPROACHES - SWINGING DOORS**
SCALE: 1/2" = 1'-0"



E3 **MOUNTING HEIGHTS**
SCALE: 1/2" = 1'-0"

SPECULATIVE TI

LINDON TECH 5
1971 W 700 N
LINDON, UT 84042

ISSUE: PERMIT SET
12 JULY 2021



REVISIONS:
CONTRACTOR TO VERIFY DRAWINGS IN FIELD USE REFLECT LAST REVISION DATE

NO.	DATE	DESCRIPTION

MHTN PROJECT NO. PROJ. #

Original drawing is 30 x 42. Do not scale contents of this drawing.

ISSUE:
PERMIT SET
12 JULY 2021

SHEET NAME:
MOUNTING HEIGHTS & CLEARANCES

SHEET NUMBER:
G200

INTERIOR WALL TYPE SCHEDULE										
TAG	DESCRIPTION	CONSTRUCTION				FIRE RESISTANCE		ACOUSTICAL		
		WIDTH	TERMINATION	LIMITING HEIGHT	HEAD DETAIL	BASE DETAIL	FIRE RATING	STANDARD	SOUND BATT	STC
S3A	5/8" GB + 3 5/8" MTL STUD + 5/8" GB	4 7/8"	TO DECK	16'-6"	D4/G500	E1/G500			Yes	40
S3BX	5/8" GB + 3 5/8" MTL STUD	4 1/4"	TO DECK	15'-6"	D4/G500	E1/G500			No	
S6A	5/8" GB + 6" MTL STUD + 5/8" GB	7 1/4"	TO DECK	24'-6"	D4/G500	E1/G500			Yes	41

INTERIOR WALL TYPE GENERAL NOTES

RE: G500 for wall termination details which occur at metal deck/structure or at base of wall.

Continuity:

Wall type designations imply that the walls are continuous, typically from corner to corner and until another wall type is indicated. At the intersection of walls of dissimilar sound and/or fire-resistance ratings, the wall with the more restrictive requirements shall continue through, uninterrupted and shall take precedence.

Typical Interior Wall Type: S3A, UNO.

Glass-mat Tile Backing Board:

Where stud walls with tile finishes are scheduled, provide glass-mat tile backing board for the full height and width of the tile. Balance of wall to be gypsum board, UNO.

Water-resistant Gypsum Board:

Provide water-resistant gypsum board at walls in wet areas with non-tile finishes.

Acoustical Sealant:

At metal stud walls with an STC rating, provide acoustical sealant at top and bottom tracks.

Sound Attenuation Batts:

Where indicated, provide sound attenuation batts sized to fit snugly in the wall cavity. Fill all voids in the wall, from floor to deck, including at wall intersections to prevent sound leakage into adjacent rooms.

Metal Stud Partitions:

Extend interior walls and partitions from floor to roof deck or floor deck above, unless noted otherwise. The specifications indicate a minimum metal stud gauge, increase the gauge above the minimum as required by the metal stud manufacturer for actual wall heights, deflection criteria and code required horizontal load.

Design requirements for metal stud walls: 5 PSF lateral load; L/240 deflection. Stud Spacing: 16" on center, unless noted otherwise.

Provide bracing at 48" OC maximum at non-composite walls (walls that don't have gypsum board full height on each side of the stud).

Provide control joints at 30'-0" OC maximum. If not shown, coordinate location with Architect.

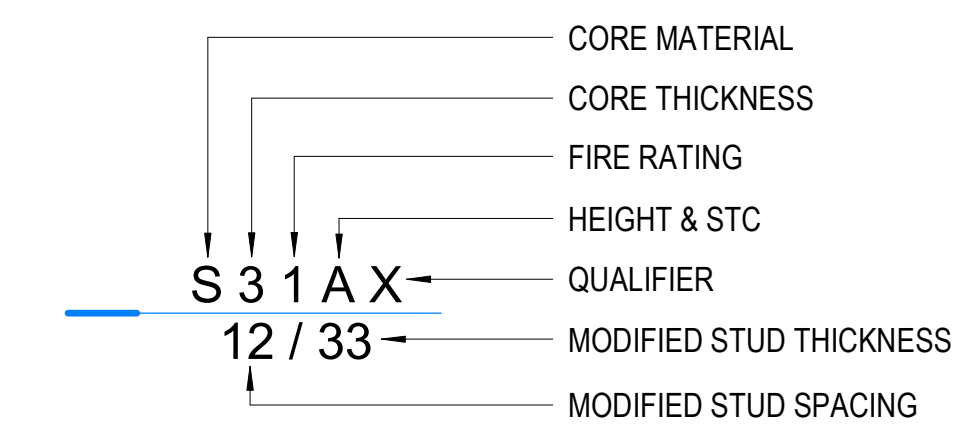
Rated Wall Identification:

Provide 3" high block letters (with 3/8" minimum stroke), stencil the fire resistance rating on the wall at 30' maximum intervals, measured horizontally and within 15' of the end of the wall. Provide one (1) label minimum per wall. Locate identification in accessible concealed floor areas, if any and in the accessible space between ceiling and structure above.

Wall Schedule Abbreviations

CMU - Concrete Masonry Unit
GB - Gypsum Board
GTB - Glass-mat Tile Backing Board
IGB - Impact-resistant Gypsum Board

WALL TYPE TAG DESCRIPTION



Core Material:

S - Metal Stud
H - Metal CH Stud
M - Concrete Masonry (CMU)
B - Structural Clay Brick
C - Concrete
W - Wood

Core Thickness:

Metal Studs:
Number indicates metal stud thickness, rounded down where applicable
0 - 7/8"
1 - 1 5/8"
2 - 2 1/2"
3 - 3 5/8"
4 - 4"
6 - 6"
8 - 8"

Brick and CMU:

Number indicates nominal thickness
4 - 3 5/8"
6 - 5 5/8"
8 - 7 5/8"
0 - 9 5/8"
2 - 11 5/8"

Concrete:

Number corresponds to thickness in whole inches
8 - 8"
0 - 10"
2 - 12"

Wood:

Number indicates nominal size of 2x framing
4 - 2 x 4
6 - 2 x 6
8 - 2 x 8

Rating:

Number indicates the fire-resistive rating in hours. Unrated walls have no designation.

Height and STC:

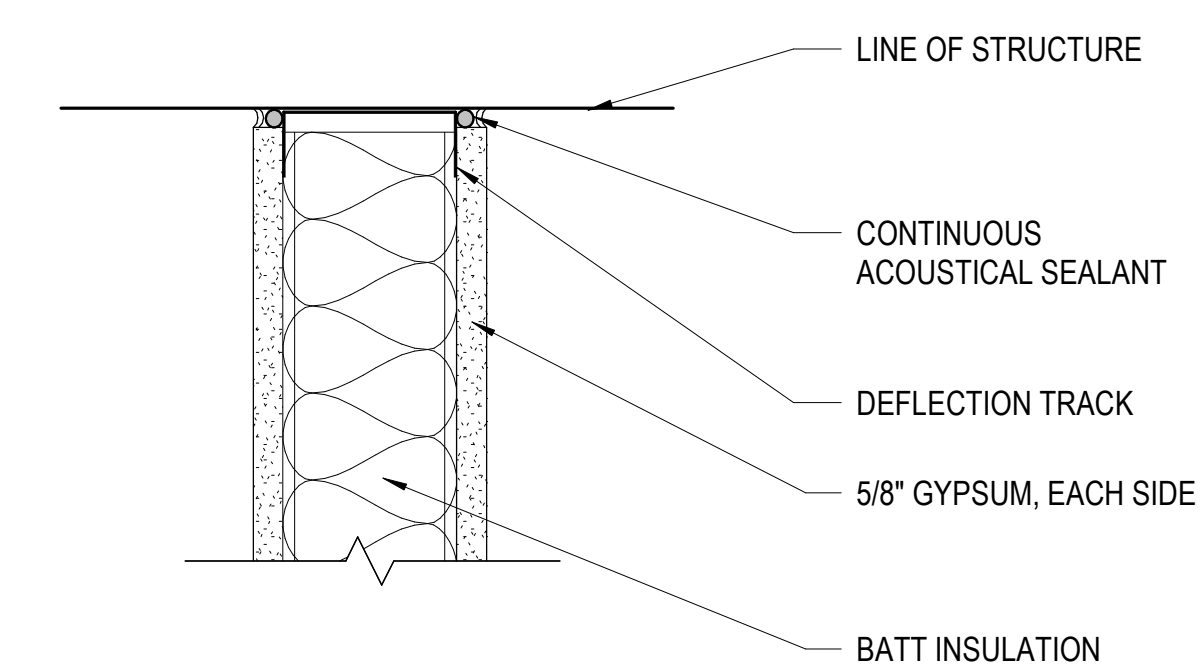
A - Wall is continuous to the structural deck above and includes sound batt
B - Wall is continuous to the structural deck above with no sound batt
C - Wall extends to 6" above the ceiling and includes sound batt
D - Wall extends to 6" above the ceiling with no sound batt
E - Wall extends to finished ceiling and includes sound batt
F - Wall extends to finished ceiling with no sound batt
P - Wall is partial height (to 5'-0" AFF) (- RE: Floor Plan for top of wall)

Qualifiers:

H - CMU with honed face finish
S - CMU with split face finish

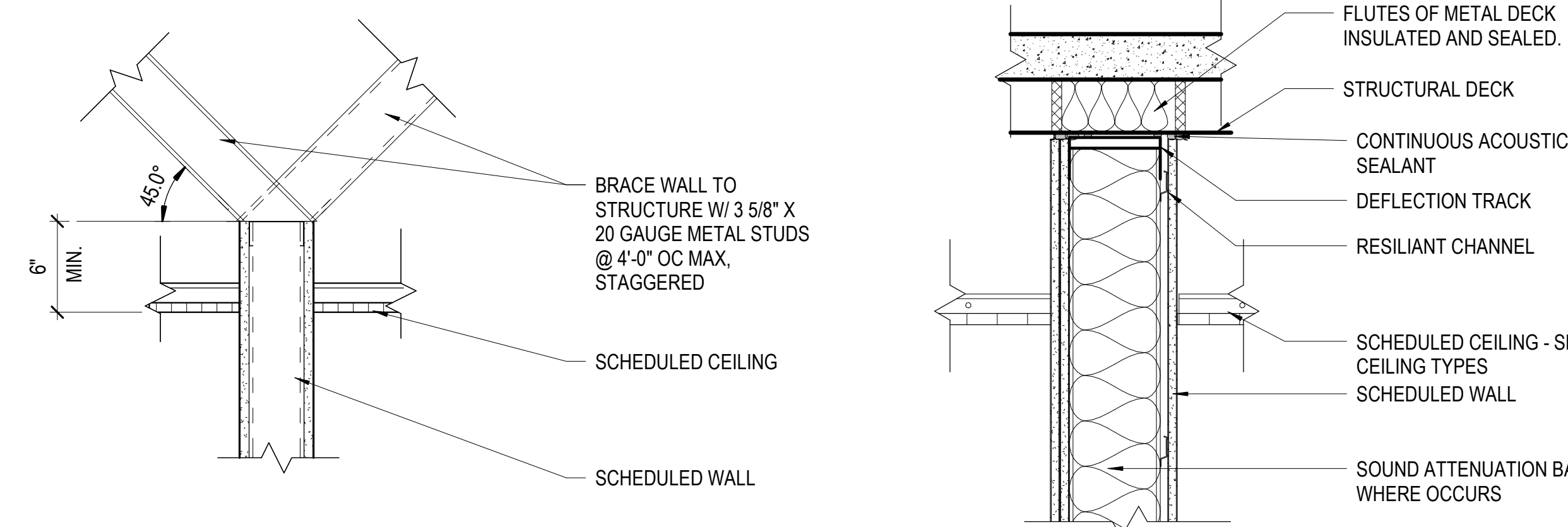
Asymmetric Modifiers:

X - Single side gypsum board
T - Glass-mat tile backing board with tile finish



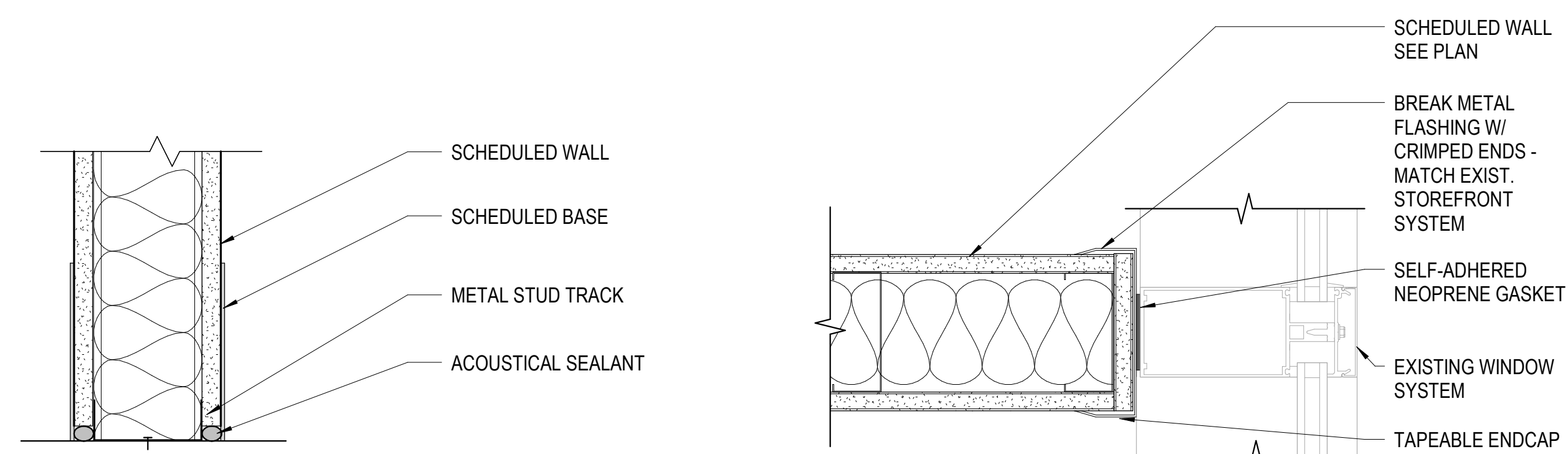
D4 WALL HEAD DETAIL

SCALE: 3" = 1'-0"



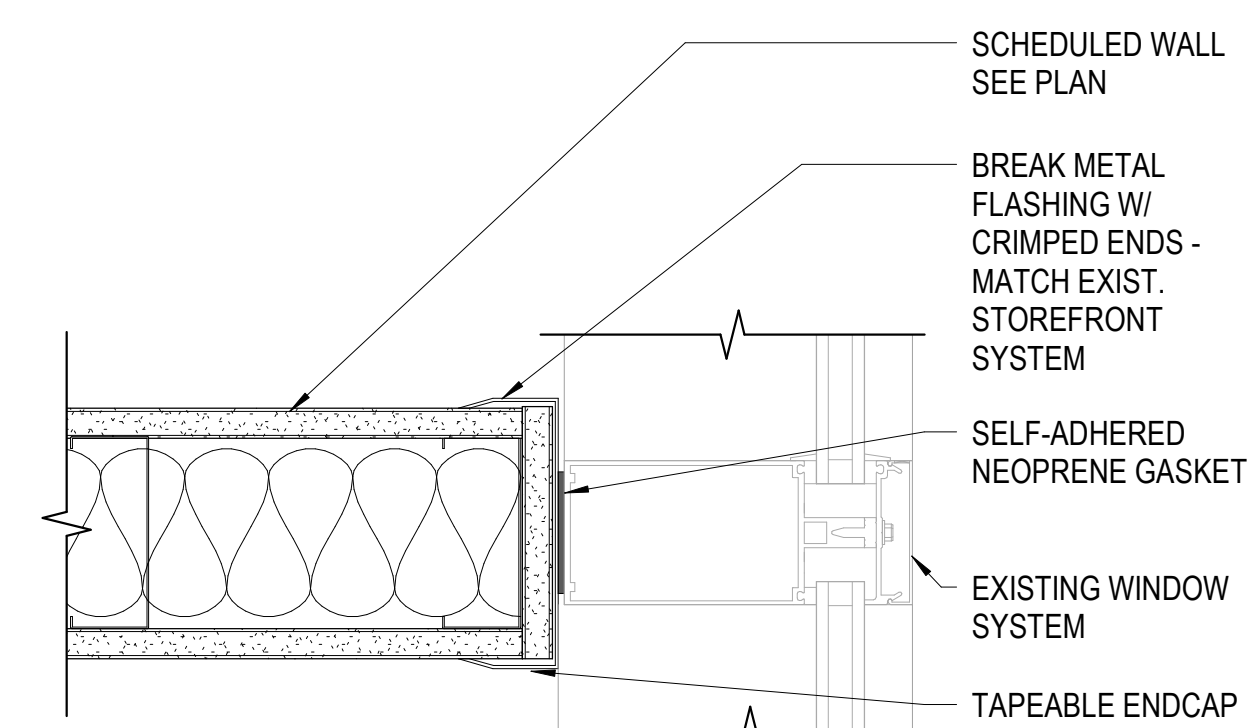
E4 HEAD DETAIL

SCALE: 1 1/2" = 1'-0"



E1 WALL BASE DETAIL

SCALE: 3" = 1'-0"



E2 WALL / MULLION DETAIL-TYPICAL

SCALE: 3" = 1'-0"

E3 WALL HEAD DETAIL

SCALE: 1 1/2" = 1'-0"

C:\Users\SarahM\Documents\A31_2021055_Lindon_Tech_Speculative_TI_CENTRAL_Saramone.rvt 7/12/2021 2:22:31 PM

©2021 MHTN ARCHITECTS, INC.
Confidentiality Notice
This document is intended for use on the Project identified herein by individuals and companies involved in the design, permitting, bidding and construction of the Project. MHTN ARCHITECTS, INC. grants neither title, distribution and reproduction of this document for any other purpose. Distribution, printing or copying of this document for purposes other than those indicated is strictly prohibited. If a digital copy of this document is received in error, please delete it.



MHTN PROJECT NO: PROJ #

Original drawing is 36 x 42. Do not scale contents of this drawing.

REVISIONS:
CONTRACTOR TO VERIFY DRAWINGS IN FIELD USE REFLECT LAST REVISION DATE.

NO.	DATE	DESCRIPTION

ISSUE:
PERMIT SET
12 JULY 2021

SHEET NAME:
INTERIOR WALL TYPES

SHEET NUMBER:
G500

PAINTING

1. Gypsum Board Walls and Ceilings: Provide Low-Luster, Acrylic-Enamel, 2 finish coats over a primer, except where noted otherwise:
 - A. Primer: ProMar 200 Zero VOC Interior Latex Primer, B28W-2600 0 g/L VOC
 - B. First and Second Coats: Low-luster (eggshell or satin), acrylic-latex, interior enamel applied at spreading rate recommended by the manufacturer to achieve a total dry film thickness of not less than 2.8 mils.
 - a. 1st coat: ProMar 200 Zero VOC Eg-Shel B26-2600 series, 0 g/L VOC.
 - b. 2nd coat: ProMar 200 Zero VOC Eg-Shel B26-2600 series, 0 g/L VOC.
2. Gypsum Board Walls and Ceilings: Provide Epoxy Coating, 2 coats over a primer.
 - A. Primer: ProMar 200 Zero VOC Primer, B28W2600, 0 g/L VOC
 - B. Two finish coats, applied at a dry film thickness not less than 1.5 mil dry film thickness.
 - a. 1st coat: Pro Industrial Water-Based Epoxy Eg-Shel, B73-360 series, <50 g/L VOC.
 - b. 2nd coat: Pro Industrial Water-Based Epoxy Eg-Shel, B73-360 series, <50 g/L VOC.
3. Ferrous Metal: Provide Semi-gloss, Enamel Finish, one finish coat over an enamel undercoater and a primer.
 - A. Primer: Quick-drying, rust-inhibitive, alkyd-based primer, as recommended by the manufacturer for this substrate, applied at spreading rate recommended by the manufacturer to achieve a total dry film thickness of not less than 1.5 mils.
 - B. Primer: Pro Industrial Pro-Cryl Universal Primer, B66-310 series, <100 g/L VOC.
 - C. Finish Coat: Semigloss, enamel applied at spreading rate recommended by the manufacturer to achieve a total dry film thickness of not less than 1.3 mils.
 - a. 1st coat: Pro Industrial Acrylic Semi-Gloss, B66-650 series, 0 g/L VOC.
 - b. 2nd coat: Pro Industrial Acrylic Semi-Gloss, B66-650 series, 0 g/L VOC.

FIRE EXTINGUISHER CABINET

1. Cabinet Construction: Semi Recessed aluminum sheet box (tub), with trim, frame, door, and hardware to suit cabinet type, trim style, and door style indicated. Weld joints and grind smooth. Miter and weld perimeter door frames.
 - A. Fire-Rated Cabinets: Construct fire-rated cabinets with double walls fabricated from 0.0428-inch-thick, cold-rolled steel sheet lined with minimum 5/8-inch-thick, fire-barrier material. Provide factory-drilled mounting holes.
2. Cabinet Type: Suitable for Fire extinguisher.
 - A. Exposed Trim: One-piece combination trim and perimeter door frame overlapping surrounding wall surface with exposed trim face and wall return at outer edge (backbend).
 - a. Rolled-Edge Trim: 2-1/2-inch backbend depth.
3. Cabinet Door and Trim Material: Manufacturer's standard, as follows:
 - A. Aluminum sheet.
4. Glazing: Impact resistant as standard with manufacturer.
 - A. Glass: Clear float glass, ASTM C 1036, Type I, Class 1, Quality q3, 1.5 mm, single strength.
5. Door Style: Manufacturer's standard design: Vertical duo panel with frame. Lockable with pressure release latch.

FIRE EXTINGUISHERS

1. Multipurpose Dry-Chemical Type: UL-rated 4-A-60-B-C, 10-lb nominal capacity, in enameled-steel container.

WINDOW TREATMENTS

1. Product: Q-Motion Automated Roller shades on all exterior windows.
 - A. Finish: Architect selected
 - B. Color: Architect selected
2. Product: Existing blinds to remain. Protect during construction. Replace any bent, broken or unusable blinds.
 - A. Finish: Match Existing.
 - B. Color: Match Existing.
3. Installation:
4. Low-Voltage hardwired.

MHTN ARCHITECTS, Inc.
 280 South 400 West
 Suite 250
 Salt Lake City, Utah 84101
 Telephone (801) 585-8700
 www.mhtn.com

SPECULATIVE TI

LINDON TECH 5
1971 W 700 N
LINDON, UT 84042

©2021 MHTN ARCHITECTS, INC.
 Confidentiality Notice
 This document is intended for use on the Project identified herein by individuals and companies involved in the design, permitting, bidding and construction of the project. MHTN ARCHITECTS, Inc. grants limited rights to distribute and reproduce this document for this express purpose only. Distribution, printing or copying this document for purposes other than those indicated is strictly prohibited. If a digital copy of this document is received in error, please delete it.

SEAL



MHTN PROJECT NO. PROJ #

Original Drawing is 30 x 42. Do not scale contents of this drawing.

REVISIONS:
CONTRACTOR TO VERIFY DRAWINGS IN FIELD USE REFLECT LAST REVISION DATE.

NO.	DATE	DESCRIPTION

ISSUE
PERMIT SET
12 JULY 2021

SHEET NAME
SPECIFICATION

SHEET NUMBER
G701